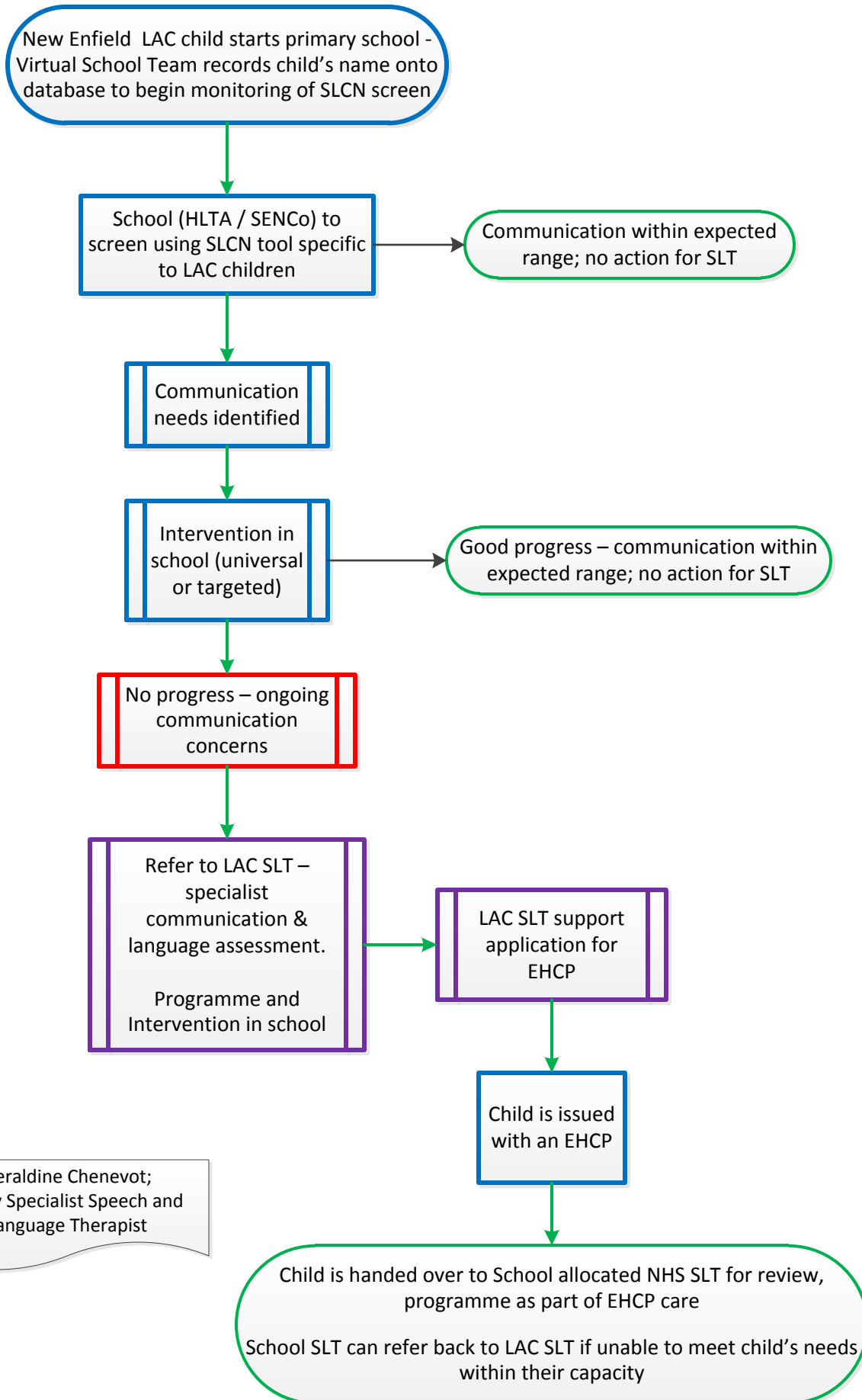


Speech and Language Therapy – LAC Care Pathway Primary – children attending Enfield Primary without EHCP



Geraldine Chenevot;
Highly Specialist Speech and
Language Therapist

Speech and Language Therapy – LAC Care Pathway Secondary – attending Enfield Secondary School – student without EHCP

New LAC student starts secondary school - Virtual School Team records student's name onto database to begin monitoring of SLCN screen

School (HLTA / SENCo) to screen using SLCN tool specific to LAC young people

Communication within expected range; no action for SLT

Communication needs identified

Refer to LAC SLT via Head of Virtual School requesting specialist communication & language assessment.
Programme, training and intervention in school; liaison with carers and school staff

LAC SLT support application for EHCP

Student is issued with an EHCP

LAC SLT to follow up on programme and intervention – offer further training if necessary

Student is handed over to School allocated NHS SLT for review, programme as part of EHCP care
School SLT can refer back to LAC SLT if unable to meet student's needs within their capacity

Geraldine Chenevot;
Highly Specialist Speech and Language Therapist

Speech and Language Therapy – LAC Care Pathway – Out of Borough without EHCP

New LAC young person starts school; inform SLT service local to that school (LAC SLT will maintain an overview of case);

In exceptional circumstances, at the discretion of the Head of Virtual School, LAC SLT will screen young person (for LAC young people on remand, virtual school will coordinate screen through YOT on a case-by-case basis)

School (HLTA / SENCo) to screen either using SLCN tool specific to LAC young people or local screening tool

Communication within expected range; no action for SLT

Communication needs identified

Refer to LAC SLT via Head of Virtual School requesting specialist communication & language assessment if local service unable to accept referral; if known to local SLT, this referral will provide overview to ensure needs being met.

Possible support for programme, training and Intervention in school; liaison with carers and school staff

Local or LAC SLT support application for EHCP

Student is issued with an EHCP

LAC SLT to follow up on programme and intervention – offer further training if not available locally

Geraldine Chenevot;
Highly Specialist Speech and
Language Therapist