

# ENFIELD ADVISORY SERVICE FOR AUTISM

## Monthly Newsletter for Educational Settings

ISSUE NO: 6 - MARCH 2020

### EASA's Latest News

We are very pleased to announce that we now have some new colleagues on our staff team and more space for training and events!

We have two very experienced and enthusiastic Advisory Teachers who are joining the team to help with all our consultancy work and training in schools. They are Linda Nevin-Drummond and Vaneessa Sudan.



Linda  
Nevin-Drummond



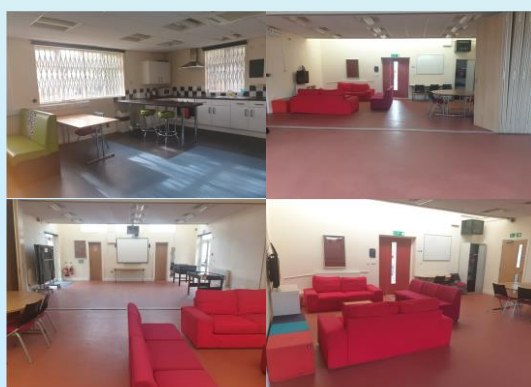
Vaneessa Sudan




Claire Collins

We will be continuing to develop our partnership work with the Educational Psychology Service and our new link EP is Claire Collins.

It is very good news that EASA now has use of additional rooms in the Bell Lane Youth Centre (adjoining our original premises) during term time. This means we can increase capacity for training and workshops, as well as offer a more flexible service for staff and parents.



### What's On at EASA Bell Lane

 **AET Schools Good Autism Practice @ Russet House School, 11 Autumn Close, EN1 4JA**

#### **Session 1 of 4**

Tuesday 3rd March 2020

3:30pm – 5.00pm

#### **Session 2 of 4**

Tuesday 10th March 2020

3:30pm – 5.00pm

#### **Session 3 of 4**

Tuesday 17th March 2020

3:30pm – 5.00pm

#### **Session 4 of 4**


Tuesday 24th March 2020

3:30pm – 5.00pm

 **Advice Surgery for Education Staff**

Wednesday 25<sup>th</sup> March 2020

1.00pm – 3.30pm

 **AET Schools Extending & Enhancing Good Autism Practice @ Russet House School, 11 Autumn Close, EN1 4JA**

Thursday 31<sup>st</sup> March 2020

3.00pm – 6.00pm

### **Advanced Notice**

 **Advice Surgery for Education Staff**

Wednesday 29<sup>th</sup> April

1.00pm – 3.30pm

 **AET EYFS Leading Good Autism Practice**

Thursday 14<sup>th</sup> May

9.00am – 3.30pm

## EASA's Standards of the Month

(taken from the AET Schools Standards)

This month, we are focusing on the AET Standards that link to understanding behaviour. These are:



### *The Individual Pupil Standard 5:*

Your setting places value on a knowledge of autism and accepts that this underpins the analysis and interpretation of a pupil's performance and behaviour to inform effective strategies.

### *Enabling Environments Standard 6:*

Your setting takes into account the effect of external environmental factors when analysing the behaviour that challenges staff.

These standards remind us that autistic differences can affect the way a pupil understands what is expected of him or her. We also know an autistic pupil might interpret the school environment very differently to their neurotypical peers. One of the key messages in all the AET training modules, is for staff to try to understand the world through the eyes of someone with autism and to appreciate how confusing and overwhelming many everyday school demands can be. This awareness can help us to put strategies in place that will guide our autistic learners in their understanding of routines, boundaries and expectations. If you would like help with strategies to support you in implementing these standards, please get in touch.

You will see from our Parent Newsletter that our Parent Workshop and Coffee Mornings this month will be focusing on **Behaviour, Routines and Boundaries**. If you know of any parents who would like help with this, do pass on the Parent Newsletter. Places at Parent Workshops are limited and must be booked but Coffee Mornings and Drop-ins at our Bell Lane centre are open access.



**National  
Autistic  
Society**

**World Autism  
Awareness Week**  
**30 March - 5 April  
2020**

**Is your school doing anything special for World Autism Awareness Week this year?**

Some schools have told us they are thinking of holding autism themed assemblies to raise awareness amongst pupils and staff. There are lots of ideas on the National Autistic Society's website, including free resources for schools.

Go to [www.autism.org.uk](http://www.autism.org.uk) and search for World Autism Awareness Week.

Don't forget to tell us if you're doing something special. The EASA Team would love to get involved!

 [www.enfieldasa.org.uk](http://www.enfieldasa.org.uk)

[admin@enfieldasa.org.uk](mailto:admin@enfieldasa.org.uk)

