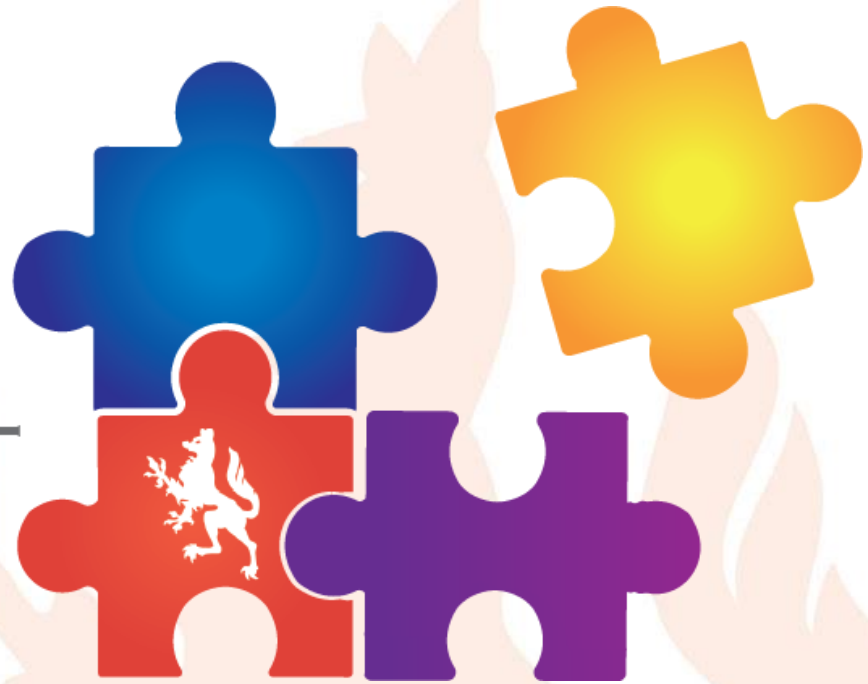


ENFIELD
PROFESSIONAL
LEARNING



Headteacher's Half Termly Newsletter No.1

May 2020

www.enfield.gov.uk

Striving for excellence



Hello!



ENFIELD
PROFESSIONAL
LEARNING



For the majority of school leaders who I have not yet met, I am the new Head of Professional Learning in Enfield; Anna Vaughan.

It is a privilege to work with the **96 schools** in the local authority to support the **57,000+ students** in them.

The aim of this half termly newsletter is to update you on what we have achieved and what is planned.

Deepest admiration is shared across the education department for the navigation you are all doing in distance teaching and learning.



Vision & Aim

ENFIELD
PROFESSIONAL
LEARNING



Our **vision** is to be forward thinking, responsive and innovative as a service, operating in a thoughtful, professional and collaborative manner.

Our **aim** is to provide professional learning that **all** schools want to include in their school development.

I know we have a lot of development to do, and the conversations we have with you are an essential part of this.

Short Term Overview

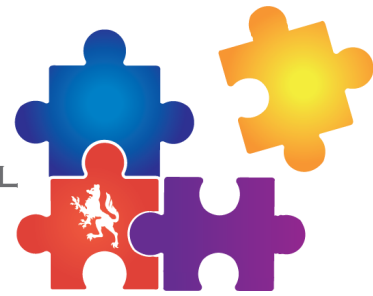
ENFIELD
PROFESSIONAL
LEARNING



- I have spoken to several school leaders and hope to soon speak to all
- We have moved planned professional learning online wherever possible
- For next half term, we are offering **new professional learning free** to all schools (some first come first served basis); highlights on slides following
- We are connecting with **key organisations** in the education world; highlights on slides following
- We have started developing a borough wide sense of community; sharing success stories is the beginning; details on slides following

Long Term Overview

ENFIELD
PROFESSIONAL
LEARNING



- We will use the [DfE's Standard for Teacher's Professional Development Implementation Guidance](#) to guide our consistent approach including:
 - A research base for all professional learning
 - A quality assurance process for all professional learning*
- We will implement a variety of measures for evaluating impact
- We will look to key findings of cognitive science to inform the design and content of professional learning

** we will base this on the proposed Chartered College QA mark due to become a national mark next year*

New Profession Learning Summer Half Term Highlights

ENFIELD
PROFESSIONAL
LEARNING



Mary Myatt webinar for Enfield Schools

Humans First, Professionals Second; Getting Back on Track



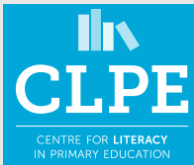
Early Excellence
Centre for Inspirational
Learning

3 webinars for Enfield schools focussing on a different aspect of Year 1 provision and EY transition; new ideas, inspiration for practice and takeaways



EMC
English & Media Centre

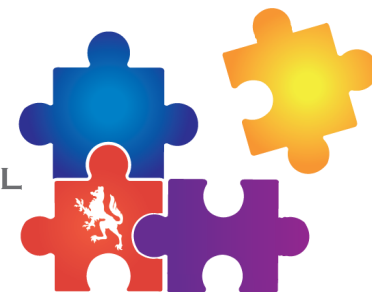
2 webinars for Enfield schools on KS3 and KS4 English



4 webinars for Enfield schools from The Centre for Literacy in Primary Education; using a text to plan your curriculum – EY, Y1/2, Y3/4, Y5/6

Collaborations with Key Organisations

ENFIELD
PROFESSIONAL
LEARNING



A charity whose drive is that *Powerful professional learning helps children succeed and teachers thrive.*

Met with the CEO to discuss collaboration for central support & pedagogical coaching professional learning for schools



CHARTERED
COLLEGE OF
TEACHING

A professional body for teachers working to celebrate, support and connect teachers, bridging the gap between practice & research.

Met to discuss long term possibilities



A charity dedicated to breaking the link between family income and educational achievement.

Setting up a meeting to continue the collaboration with Enfield



Professional Learning So Far

ENFIELD
PROFESSIONAL
LEARNING



Since face to face professional learning has been unable to happen, we have delivered over 30 online professional learning sessions including:

Primary maths
subject knowledge
& pedagogy –
Measure

RE for NQTs

SENCO Transitions
& Consultations

Science Secondary
Leaders
Development
Meeting

Professional learning in June includes:

HTLA Training

Art for NQTs

Creative &
Practical
Approaches to
RSE

Transition from
EY to Y1

Professional learning in July includes:

Using a Text to
Plan your
Curriculum

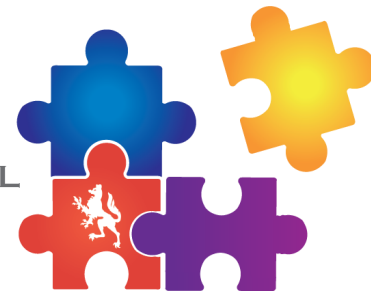
NQT Mentor
Induction

English KS3 &
KS4



New NQT Offer

ENFIELD
PROFESSIONAL
LEARNING



Our [primary NQT program](#) has been published with 3 options:

1	AB Awarding Body	Individual support for schools & NQT Bespoke support for schools & NQT Experience & negotiation for difficulties
2	AB + Professional Learning	As above + unlimited access to the year long NQT professional learning program utilizing a wide range of expertise Breadth = choice of 45 sessions over 26 weeks
3	Individual Professional Learning	Access to any session within the year long NQT professional learning program

Our [secondary NQT program](#) is out for consultation with secondary heads!

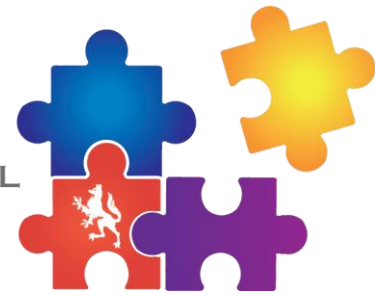
We are looking to expand both the core (transcends subject areas) and the subject professional learning.

[Early Career Framework](#) - we will be sharing our thoughts on this and working with you to support Enfield's EC teachers

We are proud that Enfield's NQT programs works in conjunction Enfield Schools Personnel Service and sarah.fryer@enfield.gov.uk as the Appropriate Body to support your NQTs

NPQ

ENFIELD
PROFESSIONAL
LEARNING



We work with Leadership East and the teaching schools we have in Enfield to deliver the NPQ courses.

We currently offer the NPQSL and NPQH; from the Autumn we will be offering NPQML

**National Professional Qualification
for Middle Leadership (NPQML)**



If you are interested in finding out more about the NPQML Middle Leaders course, we will be holding an information webinar next half term; register your interest with Michelle Williams: michelle.Williams@enfield.gov.uk



Online/Distance/Remote Learning

ENFIELD
PROFESSIONAL
LEARNING



We know that all schools have had to up-level their skills rapidly; we have 3 types of support to guide you with the technical & pedagogical aspects of online learning:

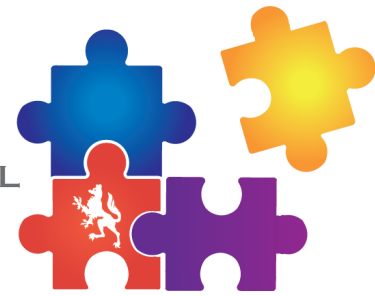
1. We are working closely with the national DfE program Ed Tech Demonstrator; individual support for schools details on slides following
2. We have support from the Central Enfield CLC details on slides following
3. We have with the CLC produced a Virtual Learning Environment (VLE) to share resources details on slides following
4. We are producing a framework for blended & hybrid learning*

*blended = same cohort experiencing consecutive face to face and online sessions

hybrid = 2 concurrent cohorts; 1 experiencing face to face and 1 experiencing online

Ed Tech Demonstrator

ENFIELD
PROFESSIONAL
LEARNING



- Enfield are working directly with the Ed Tech Demonstrator and [Ty Goddard](#) who leads this; we are involved in the national **Digital Strategy** they are leading
 - To access DfE funded peer-to-peer advice and support, **register** for Edtech Demonstrators Programme online today <https://edtech-demonstrator.lgfl.net/home>
 - We are looking to form an **action group** of 2 or 3 schools to work closely with our team and Ed Tech Demonstrator – this is part of making Enfield the first to pledge borough-wide support
- ★ Please **contact me** if you would like to be in this action group anna.vaughan@enfield.gov.uk

Central Enfield CLC



ENFIELD
PROFESSIONAL
LEARNING



- We offer schools in Enfield support and guidance with technology
- We understand that schools are adapting and changing the ways they are working and want to be on hand to support Enfield schools with the changes they are being faced with
- As well as working with our buyback schools we would invite all schools to complete this short questionnaire on the systems you are using so we can listen and advise with regard to further support: <https://www.centralenfieldclc.org.uk/online-learning-platforms/>
- LGfL integrated Google classroom: <https://www.lgfl.net/services/google-apps>
- LGfL integrated Office 365: <https://www.lgfl.net/services/office-365>

VLE

Virtual Learning Environment

ENFIELD
PROFESSIONAL
LEARNING



This is in early stages, but we are using it to share initially these 3 areas and will expand.

The platform is also a test bed for blended professional learning.

Click on any of the boxes to go through to the VLE

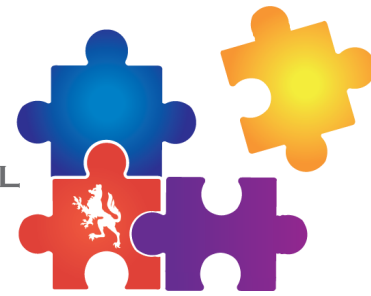
Community

Research

Technical

Community

ENFIELD
PROFESSIONAL
LEARNING



Through speaking with teachers across the borough, we have written up their recent success stories so that others can benefit.

Thank you to the schools that have contributed so far:

Click on any of the boxes to go through to individual stories or the VLE

Oakthorpe
Primary

Waverley
Special X2

Wolfsen
Hillel
Primary X2

Starks Field
Primary

Chace
Secondary
X2

St John &
St James
Primary

Heron Hall
Secondary

Hadley
Wood
Primary

Please get in contact if you think you have a teacher that would be happy to share.

We are also growing our own collection of [Top Tips](#) from the Education Department.

Educational Psychology

ENFIELD
PROFESSIONAL
LEARNING



We are thrilled to be collaborating with Enfield's Educational Psychology Service and are in the process of bringing on board other partners to provide a coherent and high quality professional learning programme which is enhanced and sustained by local understanding and knowledge.

We want to support schools in creating a culture where all children and young people are supported, whatever their need so they can be confident successful learners.

Short term – we are promoting a recovery program to be published next term. This includes our new partner service Kooth details on slides following

Long term – we will be working together on a borough wide initiative for Trauma Informed practice in schools



ENFIELD
PROFESSIONAL
LEARNING



Kooth is a ***free online counselling and emotional well-being support service for young people in Enfield 11-18***

It is a safe, secure and anonymous means of accessing support for their emotional needs, from a team of qualified counsellors.

Find out more at an introductory webinar for all school staff

Please fill in one of the Google Forms below to register interest in attendance for the session you wish to attend. You will then be emailed an invite to the webinar.

- **Session 1** May 27th 11.00 am - 12.00pm [Click to register](#)
- **Session 2** May 28th 02.00 pm - 03.00pm [Click to Register](#)
- **Session 3** May 29th 09.30 am - 10.30am [Click to Register](#)
- **Session 4** June 1st 03.00 pm - 04.00 pm [Click to Register](#)
- **Session 5** June 2nd 03.00 pm - 04.00 pm [Click to Register](#)
- **Session 6** June 8th 09.30am - 10.30am [Click to Register](#)
- **Session 7** June 8th 03.00pm - 04.00pm [Click to Register](#)
- **Session 8** June 10th 02.00 pm - 03.00pm [Click to Register](#)
- **Session 9** June 12th 09.30 am - 10.30 am [Click to Register](#)
- **Session 10** June 16th 02.00 pm - 03.00pm [Click to Register](#)



Guiding Principles of Professional Learning

ENFIELD
PROFESSIONAL
LEARNING



I wanted to finish with some guiding principles:

- Professional Learning is created with and for schools
- External providers will be used when they offer the highest quality expertise in an area not covered within Enfield
- All professional learning is designed and delivered with strong principles of andragogy
- There are no one-off professional learning occurrences; there is always follow-up however minimal
- The latest research is used to inform our design, structure, delivery and content
- Building a community and collaborative culture is essential to success
- The professional learning offer is always dynamic and never final

Connect

ENFIELD
PROFESSIONAL
LEARNING



Please keep in contact, we need your feedback and thoughts as well as us sharing ours.



Anna.Vaughan@enfield.gov.uk



[@Annapedagogy](https://twitter.com/Annapedagogy)

If you would like any support encouraging staff to learn through Twitter, we are happy to deliver professional learning on this 😊