


Enfield Education
Spring 2021



ENFIELD
EDUCATION
SERVICE

Director's Introduction

Welcome to the second edition of the Enfield Education Service Newsletter which is designed to provide you with key information and briefings on a range of pertinent education issues in the borough and beyond.

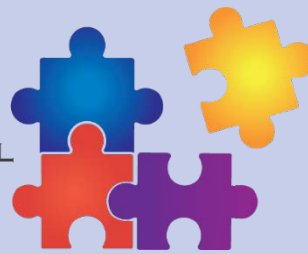
In these most challenging of times, we want to make sure that the services we provide support you and your staff in the best ways possible. We will be accountable to and for this and expect all our services to meet a high standard. We want to hear from you if there are other services that you require or feel would be useful as well as any feedback you have on what we provide.

“HIGH QUALITY EDUCATION & SERVICES FOR ALL OUR CHILDREN.

CHILDREN ARE AT THE HEART OF ALL WE DO”

“HIGH STANDARDS, QUALITY SERVICES, CHILDREN FIRST”

Peter Nathan
Director of Education
People Department



- Developing a new professional learning offer for September 2021 – advertised from April
 - All pay as you go
 - 10 categories
 - Great high quality new providers
 - Seeking the input of any of our Enfield schools


- Produced a no-cost professional learning program for TAs & SS during lockdown

- Offering remaining Digital Transformation program at no-cost for all schools

- Commissioned a new platform for professional learning that has community at the heart

- Mid-way through bespoke professional learning for swim team

Feedback from Nina Jackson's session for TAs & SS
21.1.21



Turn that lockdown frown upside down and lets do some self development!

Nexus & Enfield Professional Learning are pleased to offer a series of no-cost professional learning opportunities for Teaching Assistants and Support Staff during this latest lockdown

4 weeks only beg. 18th January

All sessions on Zoom. Link will be sent the afternoon before

Personal Development / Developing Leadership Skills		
Managing Challenging Conversations	TT Education	25.01.21 2 pm
Teaching Assistants as Leaders	TT Education	26.01.21 10 am 03.02.21 10 am
Every Learner Has Magic, But Every Teaching Assistant Has More	Nina Jackson	21.01.21:2pm
Releasing the Super-hero	Jim Roberson	09.02.21 2 pm

<https://tinyurl.com/LockdownTASSPL>

She makes me realise what we are. I am proud to become a teaching assistant.

To be proud to be a learning assistant and it gives you self confidence that your work is appreciated by other educators.

Knowing self-worth

You have made me feel on top of the world



SEYIS

From 25th January schools must publish details of their remote learning offer on their website. The DFE has produced an optional template that could help schools to decide what to publish.

The template can be found [here](#).

We have agreed to make the rest of the Digital Transformation PL free to all Enfield schools. Details have been sent out. Please contact SEYIS@enfield.gov.uk for more information.



SEYIS

Be the Light in the Darkness – The 2021 Holocaust Memorial Day



HOLOCAUST
MEMORIAL
DAY 27/1

This event is pre-recorded and you can view it any time after 7pm on 27th January via the LBE 'What's On' page HMD specific link at: <https://www.enfieldfestivals.co.uk/whats-on/hmd2021be-the-light/>. The event will be kept open for people to watch on the You Tube channel beyond Holocaust Memorial Day itself and into February.

Enfield SACRE put out a pack of resources for secondary schools to link with the event. The pack can be found on The Hub [here](#).



ENFIELD
EDUCATION
SERVICE



SEYIS

The SIA team undertook some training last year to further improve their work in schools by studying for a national quality standard award for education advisers. This covers all aspects of school support including: advisory skills, performance improvement, governance, change management, organisational development and quality management. They also became part of a national network and knowledge exchange for education advisers.

Congratulations to Cigdem Alkan, Sharon Davies, Gwyneth Hamand, Julia Hide, Christiana Kromidias, Elli Pashourtides, Helen Paton, Suzi Modi, Linda Stone, and Suzanne Tillisch on becoming accredited as associates of the Association of Education Advisers.

Congratulations, too to Linda, Helen and Christiana who have been accepted onto the Senior Associate accreditation, a cohort of only 10 across the country.

Let us know any good news stories or interesting videos that you are producing in school via twitter - @EnfieldEdUK – we can retweet and share them more widely within the Council.

EPS & SEWS Traded

Early Bird discount for bookings before 5th March 2021

ENFIELD EDUCATION

Educational Psychology Service

Educational Psychologists work in partnership with parents/carers, education staff and other professionals to promote the learning, wellbeing and mental health of children and young people from birth to 25 years.

The Educational Psychology Service (EPS) is a joint service with the Schools Emotional Wellbeing Service (SEWS) and has a strong relationship with CAMHS and other partner agencies.



SERVICE INCLUDES

- Providing a graduated consultation and intervention approach relating to the assessment and intervention of children and young people with SEND. This includes:
 - Contributing to reviews of Individual Education Plans (or similar);
 - Observation or assessment work to further develop an understanding of a child/young person's strengths and need;
 - Psychological reflections on the needs of the child/young person and recommending strategies & interventions that can support progress;
 - Providing a written record of work undertaken.

THE EPS CAN ALSO OFFER:

- Evolving / therapeutically informed interventions with individual or groups of children and/or parents
- Group work with children/young people to support on specific issues (e.g. Mindfulness, management anxiety, preparing for exams)
- Parent/Carer support (individually and in groups)
- Staff consultation/support/supervision (individually or groups)
- Preparing for a traumatic event or providing longer term support following an event.
- School INSET on areas such as approaches for learning, emotional well-being issues such as anxiety or attachment and trauma
- Developing Whole School Well-Being

ENFIELD EDUCATION

Schools Emotional Well-Being Service

The Schools Emotional Wellbeing Service (SEWS) is a joint service with the Educational Psychology Service. SEWS comprises a range of emotional wellbeing/mental health practitioners and has a strong relationship with Enfield's Specialist CAMHS and other wellbeing services in the area.

SERVICES INCLUDE:

CHILDREN AND FAMILIES IN THE SCHOOL

- Assessment and therapeutic intervention
- Early identification and intervention
- Supporting referrals to Specialist Multi-Disciplinary CAMHS or similar where appropriate where there are neurodevelopmental concerns (such as ADHD/Autism)
- Ready available specialist mental health advice

- Accessible help for families
- Parent workshops or support groups
- Supporting the referral of a child/young person into specialist provision

SUPPORT AND TRAINING FOR STAFF

- Consultation/discussion with staff
- Whole school or small group staff training (including support staff)
- Staff consultation
- Bespoke training and support for staff



Free Professional Learning

Sessions remaining:

11 THURS 11TH FEB
2021 4-5.30 P.M.

Therapeutic Approaches in the Classroom

- Dr Chantell Douglas & Dr Sarif Alrai

Discover how to apply cognitive behaviour therapy principles in your classrooms to support wellbeing and learning. **Explore** the many benefits of mindfulness, and how to bring it to life for your pupils.

12 THURS 4TH MARCH
2021 4-5.30 P.M.

Working Therapeutically with

Parents and Carers - Miriam Chachamu & Claire Collins

Discover how to use therapeutic skills to have positive conversations with parents to support children's emotional needs. **Learn** to use Tree of Life approaches to strengthen school communities following the pandemic.

13 THURS 18TH MARCH
2021 4-5.30 P.M.

Staying Well: Physical Health Supporting

Mental Health - Gabriella Mitchell

Learn from Public Health how you can support pupils to stay safe and well this year. **Consider** the importance of movement for wellbeing, and **plan** how to keep your pupils active within the restrictions imposed by Covid-19.

14 THURS 1ST APRIL
2021 4-5.30 P.M.

Taking Stock: Next Steps for Community-Based Recovery

- Yasmin Ajmal, Harvey Ratner & Dr Emma Gore Langton

Reflect on your experiences of supporting your school community to recover and thrive over the autumn and spring terms. **Revisit** your guiding principles and **apply** solution-focused thinking to plan the next stages of your commitment to whole-school wellbeing.

PROFESSIONAL LEARNING
Autumn 2020 - Spring 2021

PROMOTING RESILIENCE AND RECOVERY WITH OUR SCHOOL COMMUNITIES

NO COST TO SCHOOLS

Across Primary,
Secondary & Post-16

ENFIELD PROFESSIONAL LEARNING
ENFIELD BOROUGH COUNCIL

School staff wellbeing – individual support from the EPS



Are you feeling:
Stressed?
Anxious or worried?
Burnt out?
Low?
Exhausted or not sleeping?
No time for yourself?
Isolated?

ENFIELD EDUCATIONAL PSYCHOLOGY SERVICE: TELEPHONE SUPPORT LINE FOR SCHOOL STAFF

We know that all staff in schools are facing unprecedented challenges.

As part of the Government's Wellbeing for Education Return programme, Enfield EP Service is offering all members of staff in our Enfield schools the opportunity to speak to an Educational Psychologist about any aspect of their wellbeing.

To book a telephone call, please complete the form [here](#) or email eps-sews@enfield.gov.uk

We will record usage and themes for the purpose of reporting to the DfE about how the grant has been used. We will not record or report your personal details, and calls are strictly confidential. If we feel very worried about your safety or the safety of others, we will need to alert someone, but we will always try to talk to you first.



ENFIELD EDUCATIONAL PSYCHOLOGY SERVICE: TELEPHONE SUPPORT LINE FOR EDUCATION HEADS & SENIOR LEADERS

We know that Heads and Senior Leaders are facing unprecedented challenge and stress. Many of you have told us that you would value some individualised support.

As part of the Government's Wellbeing for Education Return programme, Enfield EP Service is offering Enfield Heads and Senior Leaders the opportunity to speak to our Senior Specialist Educational Psychologist for SEMH about any aspect of their wellbeing.

To book a telephone call with Dr Emma Gore Langton, please email emma.gore-langton@enfield.gov.uk



We will record usage and themes for the purpose of reporting to the DfE about how the grant has been used. We will not record or report your personal details, and calls are strictly confidential.



Parent support



**WOULD YOU LIKE HELP
MANAGING YOUR
CHILD'S BEHAVIOUR?**

FREE ONLINE TWO-PART WORKSHOP FOR PARENTS

Join an Educational Psychologist and the Children's Wellbeing Practitioners to learn how to:

- Build on your relationship through play and attention



**ENFIELD EDUCATIONAL
PSYCHOLOGY SERVICE:
TELEPHONE SUPPORT LINE
FOR PARENTS & CARERS**

In response to COVID-19 and the Government's Wellbeing for Education Return programme, Enfield EP Service is offering Enfield parents and carers the opportunity to speak to an Educational Psychologist (EP) about a concern or issue they may have in relation to their child.

Educational Psychologists are professionals concerned with the development, learning and social and emotional wellbeing of children and young people. Issues we can help you to think about include:

- Transitioning back to school
- Learning
- Emotions (e.g. fears and worries, low mood, anger)
- Managing routines at home
- Resource seeking
- Signposting to appropriate services

Calls can be booked between 10am and 9pm Monday to Friday.

If you have internet access, please fill in the [online form here](#) to request a phone call.

If you don't have access to the internet, please call us to request a phone call.

0208 3792000

We aim to respond to your request within three working days.

A telephone consultation is not a formal referral to our service.



Enfield Thrives Together Network

Our continued aim is to provide a platform for our growing network of 70+ partners (services, schools and parent reps) to:

- Communicate their usual and adapted offer to support children and young people's emotional wellbeing and mental health
- Provide a platform for parents/carers and educational settings to share their experiences and needs of their communities.
- Share relevant information and resources to the network and schools
- Monthly network meeting – all welcome

e-mail suzy.francis@enfield.gov.uk to join



ENFIELD
THRIVES TOGETHER



- P2B website has lots o resources for schools
- EPS & SEWS will be sharing information that can be shared with your school communities
- Kooth is launching a campaign

Newsletter for School Governors Spring 2021-edition 1

This document informs governors of current educational developments, both within Enfield and nationally. It includes items of significance which might require some form of action by governing boards/trustees.



Climate Change – Risks and Opportunities

6th January 2021

Mitch Cooke

Director of Sustainability



- The Newsletter for Governors has been shared and is available [here](#).
- Climate Change and Sustainability training was a success padlet available [here](#).

Upcoming:

- Careers Training 8th Feb 1pm
- MGF 9th Feb 7pm **all welcome**
- EYFS 25th Feb 6pm
- Book on CPD [online](#)



Contact us

- We would welcome feedback from you on this communication or any aspect of our work.
- Please email SEYIS@enfield.gov.uk



ENFIELD
EDUCATION
SERVICE