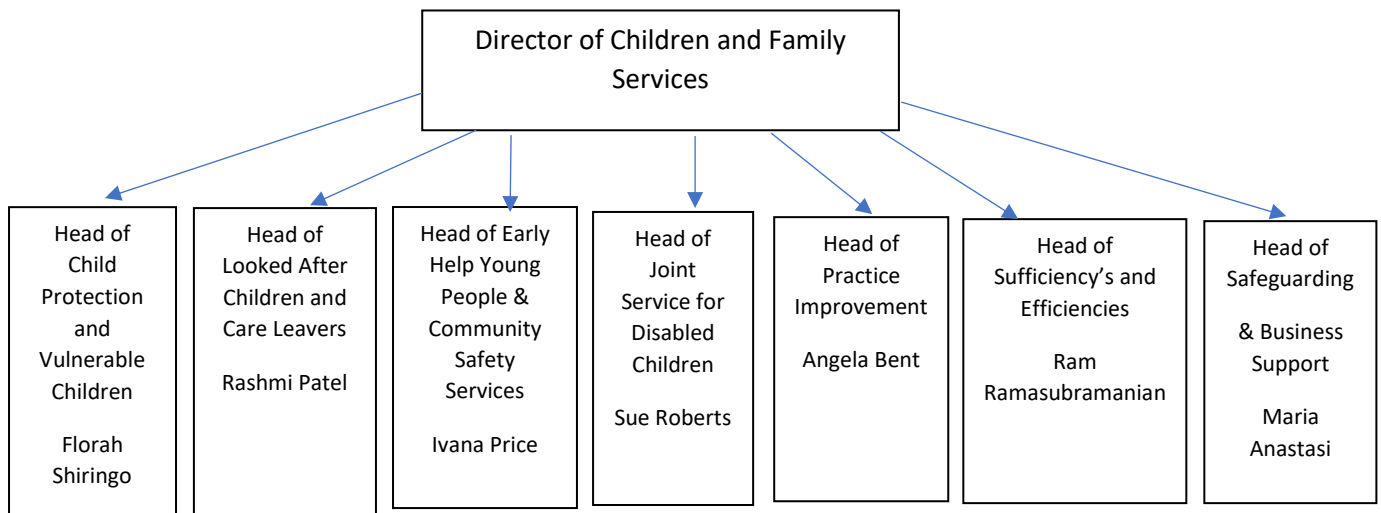


Children and Family Structure 2021



Head of Child Protection and Vulnerable Children: Florah Shiringo Mobile

- Service Manager, MASH, Assessment and Intervention: MASH (x1), Referral and Assessment Teams (x6)
- Service Manager, Child Protection and Children in Need: CPFST (x6)
- Service Manager, Children's Specialist Support Services: EDT (x1), Domestic Abuse Service (x1), Exploitation/Edge of Care Service (x3), Frontline (x1)
- Care coordinator and case management support service

Head of Early Help, Young People and Community Safety Services: Ivana Price Mobile

- Youth Offending Service
- Community Safety Unit
- Youth Support Service
- Early Help

Head of LAC and Leaving Care: Rashmi Patel Mobile

- Service Manager, LAC: Looked After Children teams (x5), Early Care Planning team (x1) and Break the Cycle Project
- Virtual School (and Heart team) and Head of Corporate Parenting
- Service Manager, Fostering and Permanence Service: Fostering, Special Guardianship Service, Contact Centre, Parenting Capacity Service
- Service Manager, Leaving Care: LC Teams (x4)

Head of Joint Service for Disabled Children (JSDC): Sue Roberts Mobile

- Service Manager JSDC: Social Work Teams (x3)
- Early Intervention Support Service (EISS)
- Short Breaks Service
- Transition and Internship
- Operational Manager:

Head of Practice Improvement: Angela Bent Mobile

- Service Manager and Principal Social Worker
- NASS Manager (national social work accreditation programme)
- Social work ASYE (assisted supported year in employment) programme adult and children
- Apprenticeships (adult and children)
- Learning and Development team adult and children
- Workforce Development,
- Practice Leads,
- Social Care Centre of Excellence
- Child Sexual Exploitation named lead SPOC
- Inspection and sector lead improvement named lead

Head of Safeguarding: Maria Anastasi Mobile

- Service Manager and LADO:
- Children and Family Services Business Support:
- Independent Reviewing Officers (LAC reviews and CP conferences)
- Quality Assurance
- FGC Service

Head of Resource and Efficiencies: Ram Ramasabramanian

- Access to Resources (places for looked after children and care leavers)
- QA regulated and unregulated placements
- Commissioning
- Efficiencies
- RFF processes
- Legal disbursement