

EASA TERMLY NEWSLETTER

for Families, Educational Settings, Professionals and Partners

In this issue:

- What is EASA and what do we do?
- EASA's Annual Survey
- EASA's work with the Autism Education Trust (AET)
- Our 2022-23 Offer

Welcome to a new year with EASA

EASA supports autistic children and young people (0-25yrs) in the borough of Enfield by providing the following:

- Autism-related advice and guidance for families and professionals
- Training, including all AET modules
- Targeted support for autistic CYP, their peers and siblings
- Assistance with local authority statutory duties and crisis response

We look forward to working with you!

EASA's Annual Survey

We conducted an online survey in June and July 2022, asking parents and schools for their views on EASA services. Here's what we found:

Q: What is EASA doing well?

A: Approachable; lots of practical ideas; specialist knowledge from staff; another set of eyes on complex problems; helpful training and resources

Q: What could be improved?

A: Referral forms—make them easier with fewer steps; provide more accessible info on the website; better access to a range of professionals

"I felt much more confident about the way I could approach my child's needs after the phone conversation with EASA"

Parent, EASA 2022 Survey

We listened! See our website for new referral forms, information and updates to our offer at www.enfieldasa.org.uk



2022 Enfield SENCO Conference: Autistic Girls
Hosted by EASA in partnership with parents, schools, NHS, EPS and LA colleagues

EASA and the Autism Education Trust

EASA is proud to be a Strategic Partner and a Training Hub of the Autism Education Trust (AET), delivering all AET training modules online and face to face. EASA uses the AET training, frameworks and resources to support culture change in Enfield educational settings and communities. We want Enfield to be a place where all autistic children and young people are understood, accepted and can thrive. The AET's vision, ethos and materials support us with this. See our website for more details:



<https://www.enfieldasa.org.uk/EASA-and-the-AET-Overview/>

Our services in 2022-23

Information and Resources

- Information sheets on a range of topics that will be added to through the year
- Links to helpful websites
- Pre-recorded presentations (accessible by invitation or request)



Training and Learning Sessions

- ATLAS Course and ATLAS Time to Play Sessions for parents and carers of newly diagnosed young children
- Autism Education Trust Training for professionals and parents (online and in settings)
- Practical 2-day Training for Classroom Practitioners (led by SaLT)
- Occasional presentations by guest speakers and sessions on topical issues
- EASA Conferences – may be in partnership with other local services
- Autism awareness training for peers of autistic children and young people

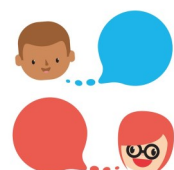
Support Meetings

- Case Study Consultations to discuss strengths, needs and provision for individual children and young people (using the AET Good Autism Practice Principles as a framework)
- 1:1 appointments with members of the EASA team
- Cuppa and Chat sessions for parents (monthly)



Programmes of Support

- EASA weekly support sessions based on the AET 8 Principles of Good Autism Practice to support implementation of the AET Standards and Competencies
- All About Me Training and Supervision Sessions for school staff, led by EPs
- TA and LSA Mentoring for EY and Primary Schools who have identified this as a need through the AET Standards audit process
- PEERS Programme (abridged) for children and young people who would like to learn more about building and sustaining friendships with their peers, led by EPs with parent sessions running alongside.
- Tree of Life therapeutic sessions for children and young people, led by EPs with parent sessions running alongside.
 - For autistic children/young people (girls group in autumn; mixed group in spring)
 - For siblings (summer term)



Opportunities to get involved

- Focus groups to discuss development initiatives (email to express interest)
- We welcome volunteers to speak at meetings/events. Some paid opportunities may be available (email to express interest)



Lots of these services, interventions and initiatives are new for 2022-23.

Please take time to read more about them on our website.

You can register for relevant sessions and/or request advice and support via our website. There are separate tabs for Educational Settings, Parents & Carers and Children and Young People at: www.enfieldasa.org.uk

If you can't find the help you want, please get in touch via email: admin@enfieldasa.org.uk or phone: 020 8353 4186

With our best wishes from the EASA Team