

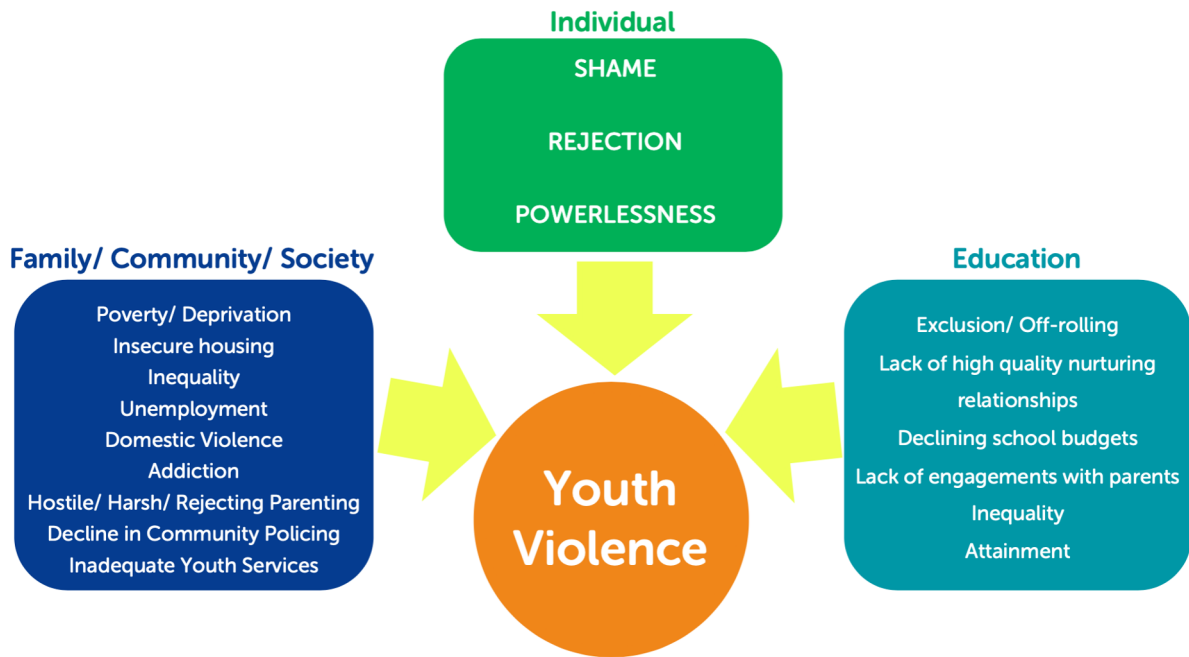


Jenny Perry : nurtureuk
Programme Manager Violence
Reduction Unit Programmes



Marie Horner : Tender
RE:SET Programme Manager

1



2

Who is nurtureuk?

Nurtureuk is the national charity dedicated to using nurturing approaches to improve children and young people's life chances.

We give children and young people the best chance of successful futures by championing nurture in education. Nurture gets to the root of children's social, emotional and mental health difficulties and gives schools the proven tools they need to deliver the right support. It improves attendance, behaviour and attainment and ensures every child is able to learn.



3

Evidence Base : Completed Work nurtureuk

"I've got numerous pupils who have not been excluded because nurture has changed how we meet their needs - we make more reasonable adjustments, check ins and space for them to voice their needs. Categorically! not just thinking of one child here, there are so many! They stay in mainstream, we are managing them and they are managing themselves" *(Secondary school leader, previous London VRU programme - 32 schools across 13 boroughs)*

"It made it apparent how much of an issue they had. It's made it possible to address needs. Particularly around youth violence and drugs. It has given us a lot more knowledge and contacts. The resources are phenomenal and the training has really highlighted further the importance of the mindset that no one 'chooses' this. The Network meetings are amazing" *(Nurture lead SLT Secondary school, Kent and Medway VRU programme - 9 schools across 6 districts)*

4

Who is Tender Education & Arts?

Tender exists to end domestic abuse and sexual violence, focusing on two core priorities:

To work with children and young adults to **prevent** them from becoming either victims or perpetrators of domestic abuse in the future.

To raise the profile of the issue and create a **step change** in terms of attitude and tolerance of domestic abuse and sexual violence from direct work in schools to training and **awareness building** for professionals supporting children and young people.



5

Evidence Base : Completed Work Tender

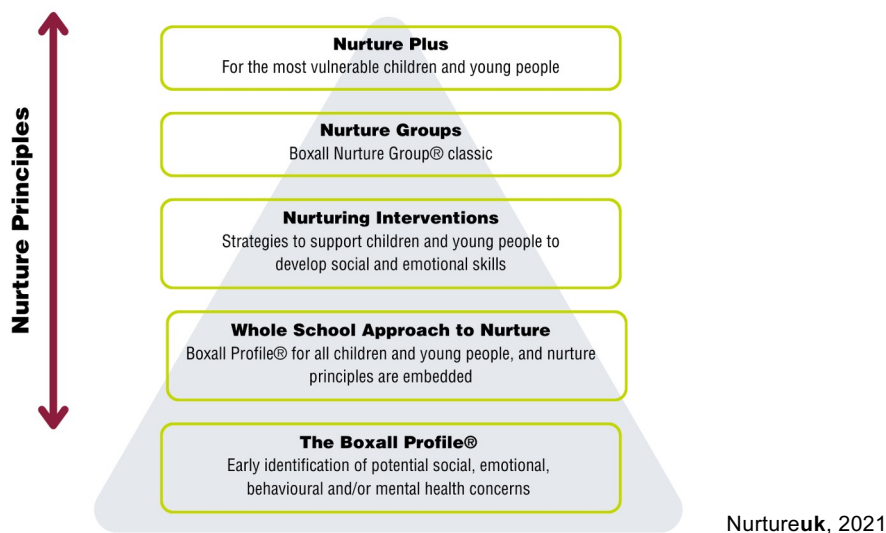
Previous participants of the RE:SET programme saw a 62% decrease in negative behaviours being logged on their school's system since taking part
(Edward Worlledge Ormiston Academy, Great Yarmouth)

"I can confidently attribute a range of student leadership highlights at Rokeby School to the RE:SET programme e.g. staff-student collaboration, student-led campaigns, parent workshops and many, many more. Also, as a member of staff who is new to RSHE and student leadership, the clear structure and SMART targets of the RE:SET programme have been invaluable! Looking forward to working with them next year already!" - *Teacher, Rokeby School*

"I'd never heard of an early warning sign before being a Healthy Relationships Ambassador for my school. Now other people will know – and either get out when it's safer to do so, and even know it's not ok to do that to someone else." - *Student, Charles Darwin School*

6

A graduated approach to nurture



7

Programme Overview

The Theory and Practice of the Boxall Profile

- Access to our mental health assessment tool, the Boxall Profile® Online for the duration of the programme, that enables the practitioner to measure and monitor pupils social, emotional needs and wellbeing.
- Access to training for school staff to learn how to utilise the online tool and interpret the results.
- In addition, an in-depth training day exploring the six principles, attachment theory and neuroscience behind the Boxall Profile®, as well as interpreting the results and planning next steps and intervention support to help pupils in need.

The National Nurturing Schools Programme (NSP)

- An 18-month journey, with each school developing a bespoke whole-school approach to embed a nurturing culture that focuses upon social and emotional needs and development alongside academic learning.
- Consists of an initial 4 group sessions followed by 1-1 tailored support sessions from our fully trained and experienced consultants to meet each schools needs when implementing the approach.

The Theory and Practice of Nurture Groups

- A 3-day (consecutive) course which focuses on how to set up and effectively run a Boxall Nurture Group®, to nurtureuk recognised, externally evaluated and accredited standards.
- The content covers 'Nurture Principles', 'The Boxall Profile®' & an assignment (completed within 12-months of finishing the training) which is accredited by the 'Scottish Credit Qualifications Framework (SCQF) Level 8.

8

RE:SET : Whole School Approach



Training for Borough Safeguarding Professionals

Introduction to Domestic and Sexual Violence (DSV)

Dynamics of DSV (including Coercive Control)

Impact of DSV on Children and Young People

Peer on Peer Abuse

Working with Children and Young People

Online Harms

9

What's next?

- **Follow up sessions** with Tender and nurtureuk can be booked on Evaluation Form.
- **School Introduction Sessions** (*virtual*)
 - To introduce the programme & what schools will gain from the programme.
 - To clarify expected commitment from schools.
 - To present borough priorities based on data.
 - To begin building relationships with the schools and understanding of their needs.

Proposed Dates : **Wednesday 12th October from 15:45 - 16:45**

Thursday 13th October from 08:00 - 09:00

Monday 17th October from 15:45 - 16:45

- Partnership Board
- Feedback and Actions



10

Feedback link: www.shorturl.at/eIMQT

Contact us:

vru@nurtureuk.org

reset@tender.org.uk

Thank you!

