

Enfield's Structure and Governance

2021 – 2022

Contents

Organisational Structure Chart	4
Education Structure Chart	5
SEN Service Structure Chart	6
Educational Psychology Service Structure Chart	7
CCG Service Structure Charts	8
BEHMHT Service Structure Chart	9
LAC and Leaving Care Service Structure Chart	10
CYP Specialist Structure Chart	11
Children's Services Structure Chart	12
ILDS Management Service Structure Chart	13
Assessment and Care Management Structure Chart	14
EY SEND Team Structure Chart	15
ECASS Structure Chart	16

Meeting Structure in Enfield

In addition to the SEND Partnership Board, other boards, panels and partnership meetings relating to SEND include:

Weekly:

- SEND Panel, chaired by the Head of SEN Service, Enfield Council.
- SEND Placement and Provision Panel, chaired by the SEN Service Manager, Enfield Council.

Monthly:

- Joint Health & Social Care Board (JHSCB) – chaired by the NCL Integrated Care Board (ICB) and Enfield Council on rotation. A children and young people’s commissioning subgroup feeds into the JHSCB.
- Enfield’s Borough Partnership Children & Young People Steering Group – chaired by NCL ICB. This includes emotional wellbeing and mental health delivery aligned with the iThrive Framework.
- Complex Issues Panel – chaired by Director of Children and Family Services, Enfield Council.
- SEND Heads of Service Meeting – chaired by Head of SEN, Enfield Council.
- SEND Operational Managers Meeting – chaired by SEN Service Manager, Enfield Council.
- SENCO Briefing – chaired by the SEND Advisor, Enfield Council.
- Designated Safeguarding Leads Network – chaired by the Inclusion and Safeguarding Advisor, Enfield Council.
- Transition Operational and Group is a multi-disciplinary group of transition leads from the JSDC, ILDS, SEN, Continuing Care, Health (see Matt’s slides) to review early notification referrals and make decisions about which Adult Service that will progress the transition for young people who have been referred – chaired by Service Manager for JSDC.
- Continuing Health Care Panel – chaired by the ICB.
- Transition Implementation Group is stakeholder group that ensures the transition process and system is still fit for purpose and aspirational – chaired by the Head of the Joint Service for Disabled Children & Head of Integrated Learning Disability Service.
- Complex Care and High-Cost Support Package Meeting – chaired by Director of Children’s Social Care.
- Dynamic Support Register – chaired by NCL ICB.

Half Termly:

- Senior Mental Health Leads Network – chaired by Educational Psychologist in the Mental Health Support Teams.

Quarterly:

- A Children and Families Housing Allocation Panel – chaired by Head of Housing with participation of Heads of Services in Children’s Services.
- CWD Housing/Social Care partnership meetings – chaired by Head of Joint Services for Disabled Children.
- NCL LD Autism Sub-Group Chaired by Systems programme lead for Learning Disability.
- NCL SEND Professionals Forum – Chaired by NCL Deputy Director CYP Commissioning.
- NCL DCO Network – Rotating, Chair across 5 boroughs.

Organisational Structure Chart

Tony Theodoulou
Executive Director – People

Carol Watson Executive Support Manager

Denise Cook-Smith Business Manager

Anne Stoker
Director – Children & Families
Karen Buttle
Personal Assistant

Rashmi Patel

Head of Looked After Children & Care Leavers

Responsible for: Edmonton Contact Centre/Virtual School for LAC/
Looked After Children/Leaving Care/Fostering & Special Guardianship Orders/
Parenting Capacity Assessment Service

Mirjan Dhano

Head of Joint Service for Disabled Children

Responsible for: Joint Service for Disabled Children/Early Intervention Support Service/
Short Breaks Service/Transition & Internship

Florah Shiringo

Head of Child Protection and Vulnerable Children

Responsible for: Emergency Duty Team/Assessment Service/MASH/Referral & Assessment
Teams/Domestic Abuse Service/Child Protection & children specialist support

Maria Anastasi

Head of Safeguarding & Business Support

Responsible for: Safeguarding & Quality Assurance/Business Support/Independent
Reviewing Officers/LADO/Child Protection Case Conferences/Family Group Conferences

Ivana Price

Head of Early Help, Youth People and Community Safety

Responsible for: Youth Offending Service/Youth Services/Community Safety/Anti-Social
Behaviour/CCTV – Public/Safety Monitoring/Domestic Violence/Prevent & Hate Crime/
Parent Support Service/Change & Challenge Early Help Triage

Ramasasi Ramasubramanian

Head of Access to Resources & Integrated Services

Responsible for: Access to Resources Integrated (children's placements)/integrated
services (children's finance), welfare benefits support and efficiency

Angela Bent

Head of Practice Improvement

Responsible for: Learning & Development Team (Adult & Children)/Workforce
Development/Principal Social Worker/Social Work Student Unit/Practice Leads/
Social Care Centre for Excellence/Sector Led Improvement

Peter Nathan
Director – Education
Sharon Thurbon
Personal Assistant

Lucy Nutt

**Head of School & Early Years
Improvement Service**

Responsible for: Schools & Early Years
Improvement/Children's Centres/
Post 16 Services

Barbara Thurgood

Head of Special Educational Needs

Responsible for: Special Educational Needs

Suzy Francis

**Principal EP/Head of Educational
Psychology & Emotional Wellbeing**

Responsible for: Educational Psychology/
Schools Emotional Wellbeing Service/
Primary Behaviour Support Service

Mervin Cato

Head of Behaviour Support (Secondary)

Responsible for:
Behaviour Support Service/Exclusions

Jo Fear

Head of Admissions & Education Welfare

Responsible for: School Admissions/Education
Welfare/Elective Home Education/Free School
Meal Eligibility

Neil Best

**Head of Education Resources
& Partnerships**

Responsible for: Schools Capital Delivery/
Pupil Place Planning/Maintained Schools
Maintenance/School Finance

Bindi Nagra

Director – Health & Adult Social Care

Connie Georgiou

Personal Assistant

Vicky Main

Head of Integrated Learning Disabilities Service

Responsible for Integrated Learning Disabilities/
Occupational Therapy/Speech & Language/
Community Nursing/Psychology/Employment

Jon Newton

Head of Older People & Physical Disabilities

Responsible for: Hospital Discharge Team/Enablement
Service/MASH/Care Management Services

Sharon Burgess

Head of Safeguarding

Responsible for: Safeguarding all Enfield Residents/Mental
Capacity Act/Deprivation of Liberty Safeguarding/Quality
Assurance Framework
& Performance Improvement

Clare Duignan

Head of Mental Health

Responsible for: Rehabilitation & Community Support &
Recovery Teams/Early Intervention in Psychosis Team/
Enfield Crisis Resolution Homes Treatment Team/Complex
Care Team/Assessment Service/
Older People Community Mental Team

Doug Wilson

Head of Strategy & Service Development

Responsible for Procurement & Commissioning in
the following service areas: Older People & Physical
Disabilities/Integrated Learning Difficulties/Mental
Health/Carers/Accommodation/Supporting Families/
SEND/Public Health Commissioning – Sexual Health,
Substance Misuse, 0-19s Services, Health Checks

Dudu Sher-Arami

Director – Public Health

Dawn Atkins

Personal Assistant

Glenn Stewart

Assistant Director Public Health

Responsible for: Partnerships: NHS,
Health & Wellbeing Board/Making
Every Contact Count (MECC)/Mental
Wellbeing/Community Resilience
Development/Health Protection &
Screening Assurance/
Workplace Health, Healthy Ageing

VACANT POST

(Temporary Interim Imminent)

Children's Public Health

Responsible for: Children and Young
People – Obesity, Oral Health/Health in
All Policies (HiAP)/Public Health Training/
Immunisations Assurance/CDOP/
Behaviours: Sexual and Reproductive
Health, Youth Violence, Substance
Misuse and Tobacco Control

Gayan Perera

Health Intelligence

Responsible for: Joint Strategic Needs
Assessment (JSNA)/Pharmaceutical
Needs/Assessment (PNA) Predictive
Analysis/Health Economics Evaluation/
CCG Advice and MoU

Education Structure Chart

Peter Nathan
Director of Education

Sharon Thurbon Executive Support Team

Lucy Nutt
Head of School
& Early Years Service

Andy Johnson
Progression & Pathways Manager

Beatrix Simpson
Senior School Improvement Advisor

Jeff Cole
Senior School Improvement Advisor

Dani Lang
Lead Inclusion & Safeguarding Adviser

Christiana Kromidias
Early Years Manager

Francesca Falcini
School & Early Years Data Manager

Head of Professional Learning
Vacancy

Neil Best
Head of Education Strategic
Resourcing and Partnerships

Bob Seera
Head of Capital Delivery

Keith Rowley
Head of Capital Commissioning

Sangeeta Brown
Education Resources Manager

Suzy Francis
Principal Educational
Psychologist Head of Service
Strategic Lead for
CYP Mental Health

Rachel Walker
Enfield Advisory Service for Autism

Dr Emma Gore-Langton
Deputy Principal Educational
Psychologist Service Manager

Chantell Douglas
Mental Health Support Teams

Dr Neerose Ubha
Senior Educational Psychologist
Team Manager

Dr Rachel Friend
Senior Lead EP for Complex Needs

Sara Bierer
Senior Educational Psychologist
Team Manager

Dr Kathryn Gibb
Senior Lead EP for SEMH

Sarah McLean
SEND Transition mManager

Claire Collins
Senior Lead EP for Autism

Nigel Ellerby Jones
Primary Behaviour Support Service

Mervin Cato
Head of Secondary
Behaviour Support

James Carrick
Deputy Head of Secondary Behaviour
Support Service

Ian Fordham
Schools Partnership Manager

Olivia Wittich
NEXUS Project Manager

KatAny Ghambary
REACH Centre Manager

Andreas Evangelou
Boxing Club Head Coach

Jo Fear
Head of Admissions
& EWS

Amanda Martin
Deputy Manager – Admissions

Sharon Clarke
Operations Manager – Education
Welfare Service

Barbara Thurogood
Head of SEN

Raju Ahmed
High Needs & Tracking Manager (MM1)

Seema Shah
Annual Review Manager (MM1)

Kerry Beldam
Assessment & Quality Assurance
Team Leader (PO2)

Meghi Stavrinou
LAC & Vulnerable Team Leader (PO2)

Emer Pearson
Post 14 Team Leader (PO2)

SEN Service Structure Chart

Barbara Thurogood
Head of SEN Service

Zulkifl Ahmed SEN Manager

Vacant Post Tribunal Case Manager

Kerry Beldam
Statutory Assessment
Team Leader

Seema Shah
Review & Transfer
Team Leader
(up to Year 9)

Emer Pearson
Post 14 Team Leader
(Year 10 & above)

Meghi Stavrinou
LAC & Vulnerable
Team Leader

Raju Ahmed
High Needs &
Tracking Manager

Kai Harper
Statutory Assessment
Case Co-ordinator

Helen Gill
Review & Transfer
Case Co-ordinator

Lee Gilbert
Post 14
Case Co-ordinator

Tanzila Aziz
LAC & Vulnerable
Case Co-ordinator

Ivana Finney
SEN Funding & Finance Officer

Rachel Forbes
Statutory Assessment
Case Co-ordinator

Jennie Jacobs
Review & Transfer
Case Co-ordinator

Jacqueline Raymond (30 hrs)
Post 14
Case Co-ordinator

Ceyda Ahmet
LAC & Vulnerable
Case Officer

Sue Curry
SEN Project Officer

Sharron Gallagher
Statutory Assessment
Case Co-ordinator

Selina Adu
Review & Transfer
Case Co-ordinator

Nicole Isles (Maternity Leave)
Cover by Nadia Malik
Post 14 Case Co-ordinator

Jackie Wildman
Business Support Officer
Front Door

Vicky Nicholl
Statutory Assessment
Case Co-ordinator

Katie Maynard
Review & Transfer
Case Co-ordinator

Blessing Uju (Temp.)
Post 14
Case Co-ordinator

Prafula Katkoria
Business Support Officer
Front Door

Charlotte Rudolph
Duty Statutory Assessment
Case Co-ordinator

Toni Jones Leach (Maternity Leave)
Cover by Florence Mampasi
Review & Transfer
Case Co-ordinator

Chiara Junicic
Post 14 Team
Business Support Officer

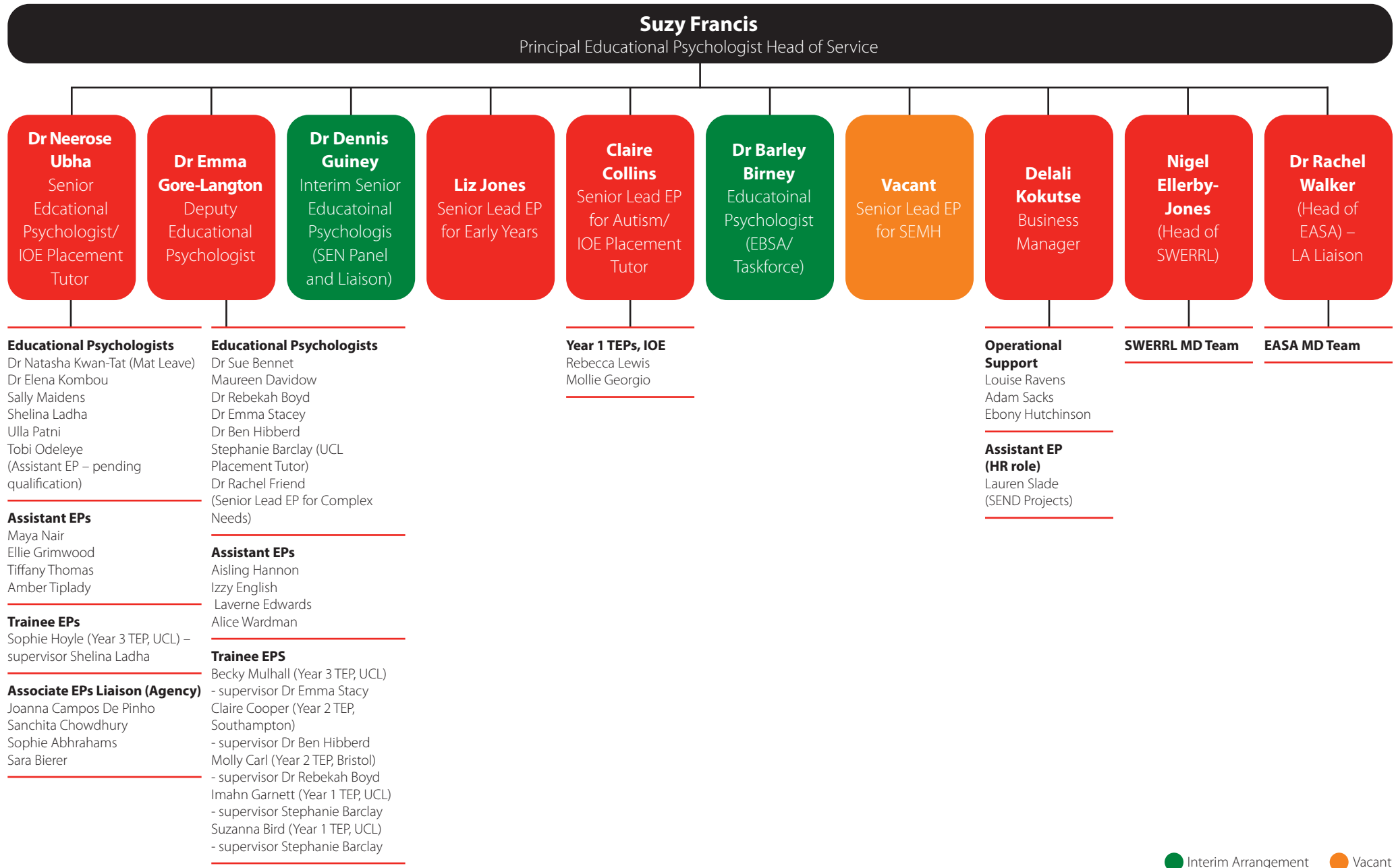
Chloe Harvey (Maternity Leave)
Cover by Shamila Anderson
Business Support Officer

Belinda Feltham (Maternity Leave)
Cover by Valerie Evans
Review & Transfer
Case Co-ordinator

Gulcan Mehmet-Emin
Business Support Officer
(Fixed Term)

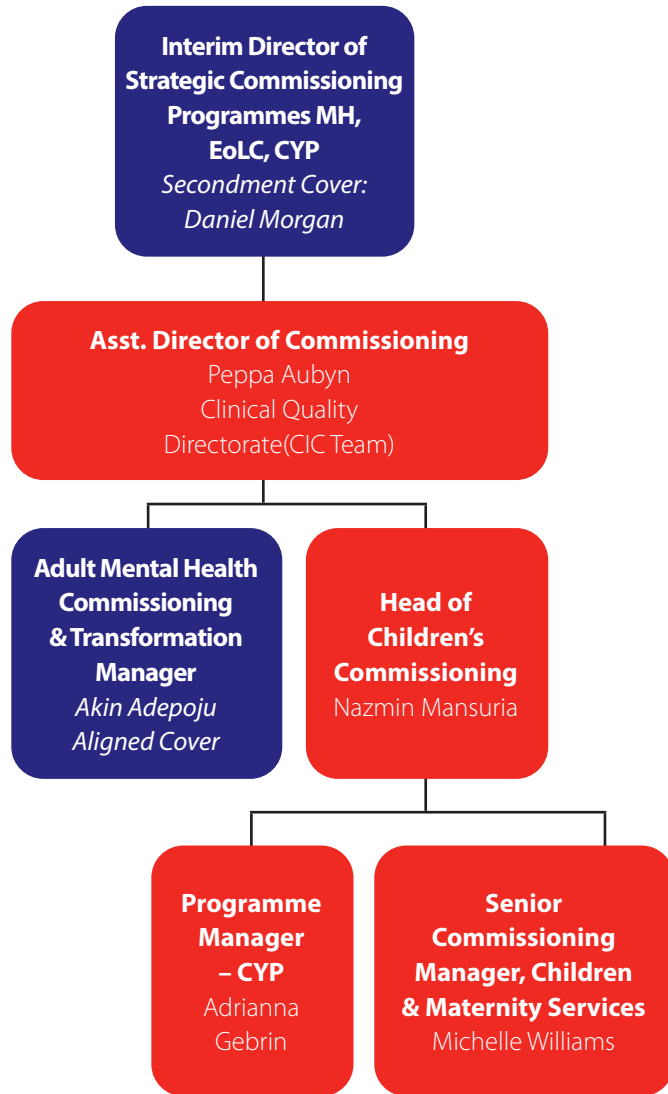
Pauline Carter
Review & Transfer
Case Officer

Educational Psychology Service Structure Chart

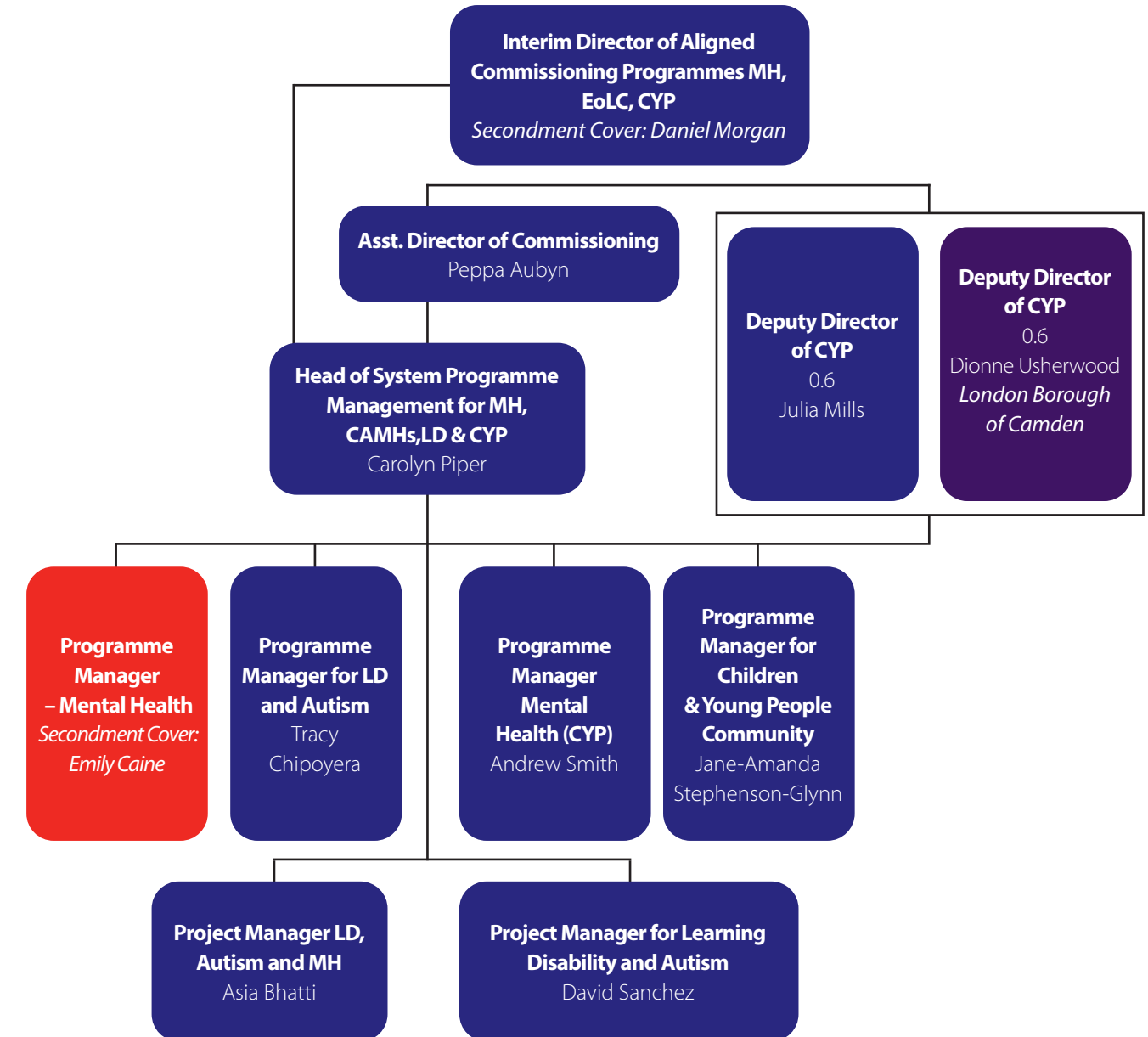


CCG Service Structure Charts

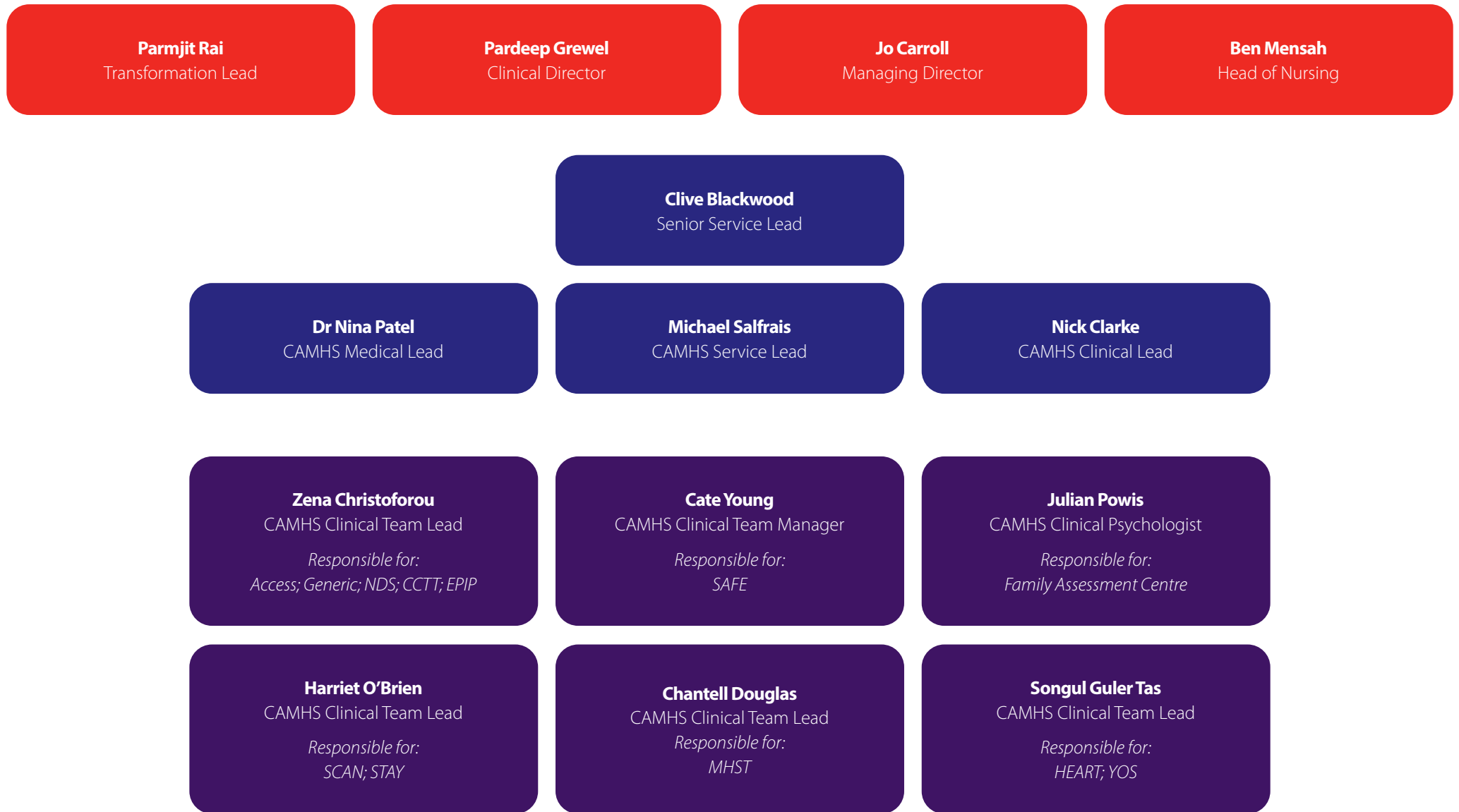
Enfield Aligned Commissioning



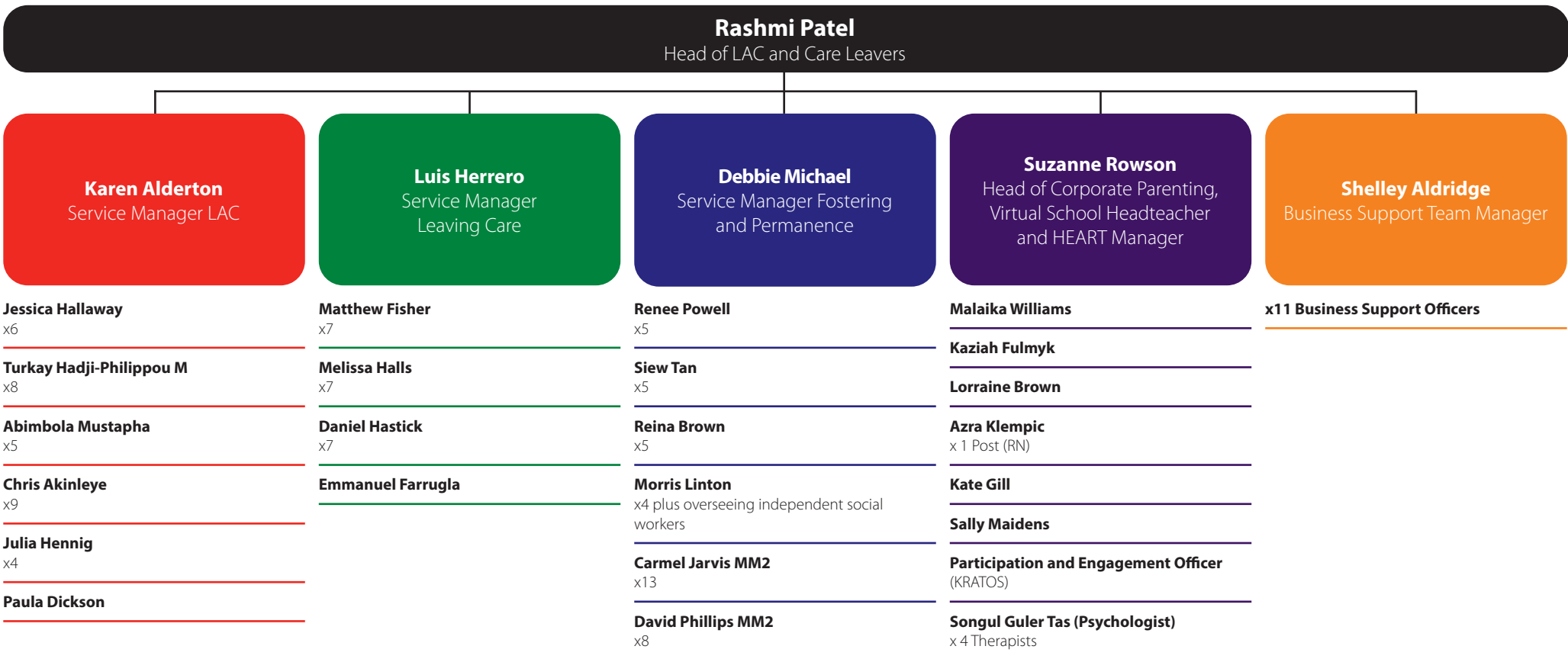
Aligned Commissioning Programmes CYP/LD/MH



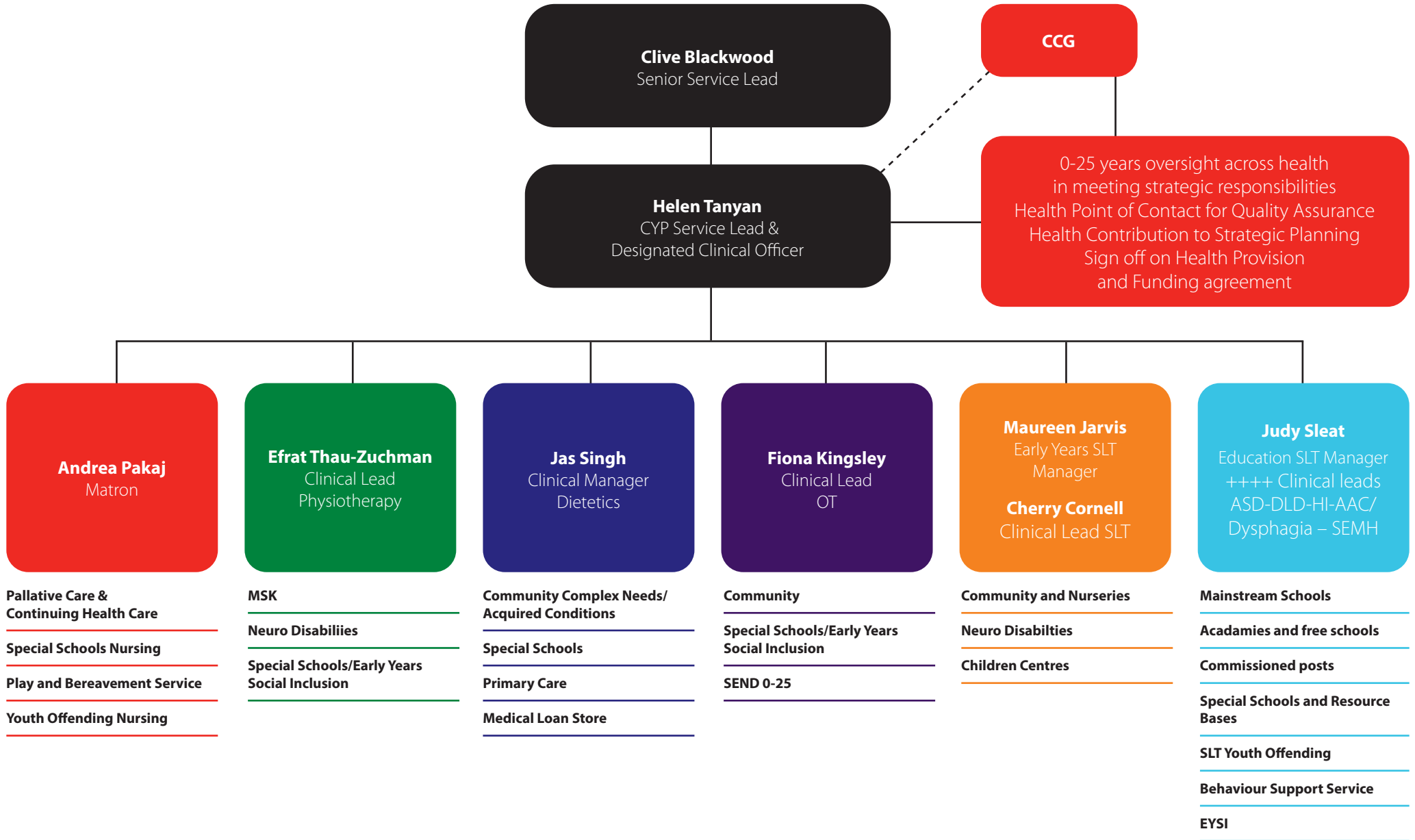
BEHMHT Service Structure Chart



LAC and Leaving Care Service Structure Chart



CYP Specialist Structure Chart



Children's Services Structure Chart

Head of the Joint Service for Disabled Children
Mirjan Dhamo

**CWD
Comissioning
Manager**
Caroline
Fanning

Service Manager
Matt Gratton

**SEND
Transition
Manager**
Sarah McLean

**Business Support
and Finance
Manager**
Asheber Tesfay

**Early Intervention
Support Service
Team Manager**
Miriam McDonagh

**Social
Work
Team
Manager**
Arzu Kaya

**Social
Work
Team
Manager**
Juliana
Orekan

**Duty and
Short Break
Hub Social
Work Team
Manager**
Kehinde Lipede
(Emine Gurbuz
will take up this
post on 10/8/22)

**Short Breaks
and Family
Support Team Manager**
Clare Redrupp

**Designated
Social Care
Officer**
Magda Beaver

**Business
Support
Officers**
Liz Mason
Debra Bullen
Rosalind Cox
Megan Steven

**Home Visiting
Teachers**
Roxanne
Ephrahim
Elizabeth Lafferty
Early Support
Keyworkers
Yvonne Yates
Michelle Barnett

**Early Years
Practitioners**
Jenny Stewart
Samantha Tebbutt
Lucy Heathman

ASWP
Sam Seddon
Social Workers
Ciara McDonagh
Abigail Jacobi
Charlotte Pearson
Faye Lyness
SW Apprentice x 1

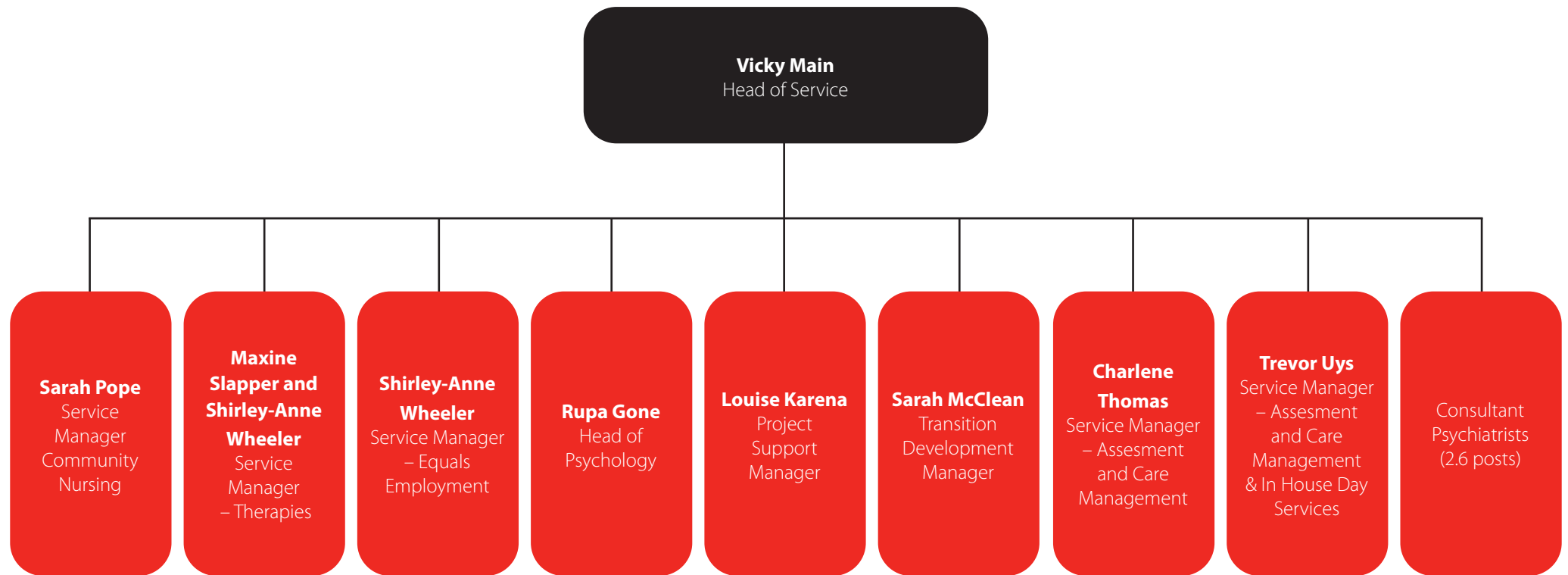
ASWP
Simons
Nyamekye
Social Workers
Emine Gurbuz
Debayo
Aridegbe
Thenjiwe
Darbey
Yaa Boateng

**Social Workers
Ekim Erdogan
Specialist
Outreach
Workers**
Samantha Storey
Gemma Cosgrove
Chidinma Okoro
(September 2022)
Social Care F/S Worker
Lucy Canton
SW apprentice x 1

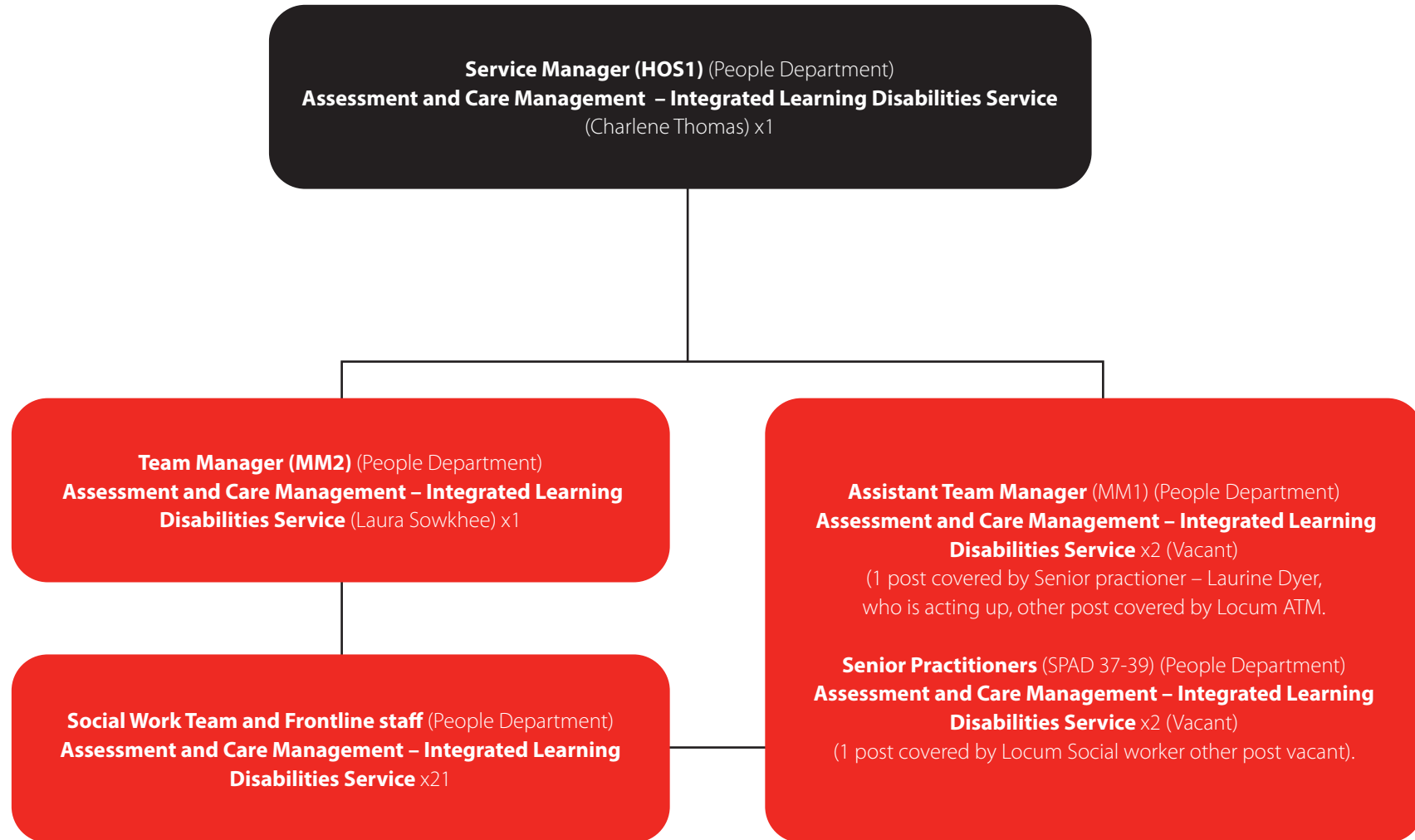
**Short Breaks
and Family
Support
Practitioners**
Sally Hibbit
Janine Helps
Ann Hopson
Lauren Harper
Theresa Atherton
Gina Marinos
Gina Giles

**Short Breaks
and Family
Support
Workers**
Dave Wetton
Emma Hopson
Laura Harris
Ian Redgewell
Ashley McKenzie
Wasima Aktar

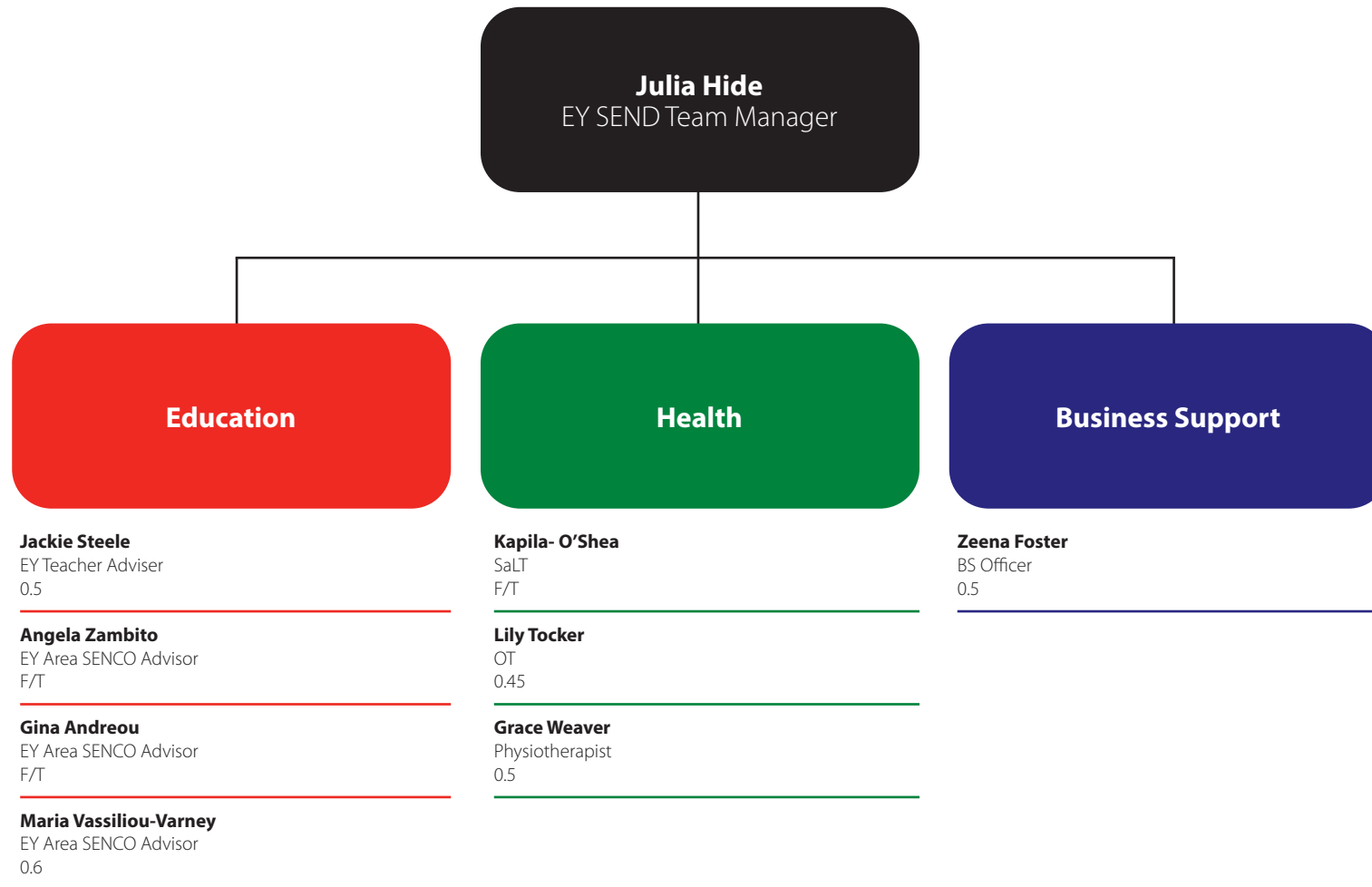
ILDS Management Service Structure Chart



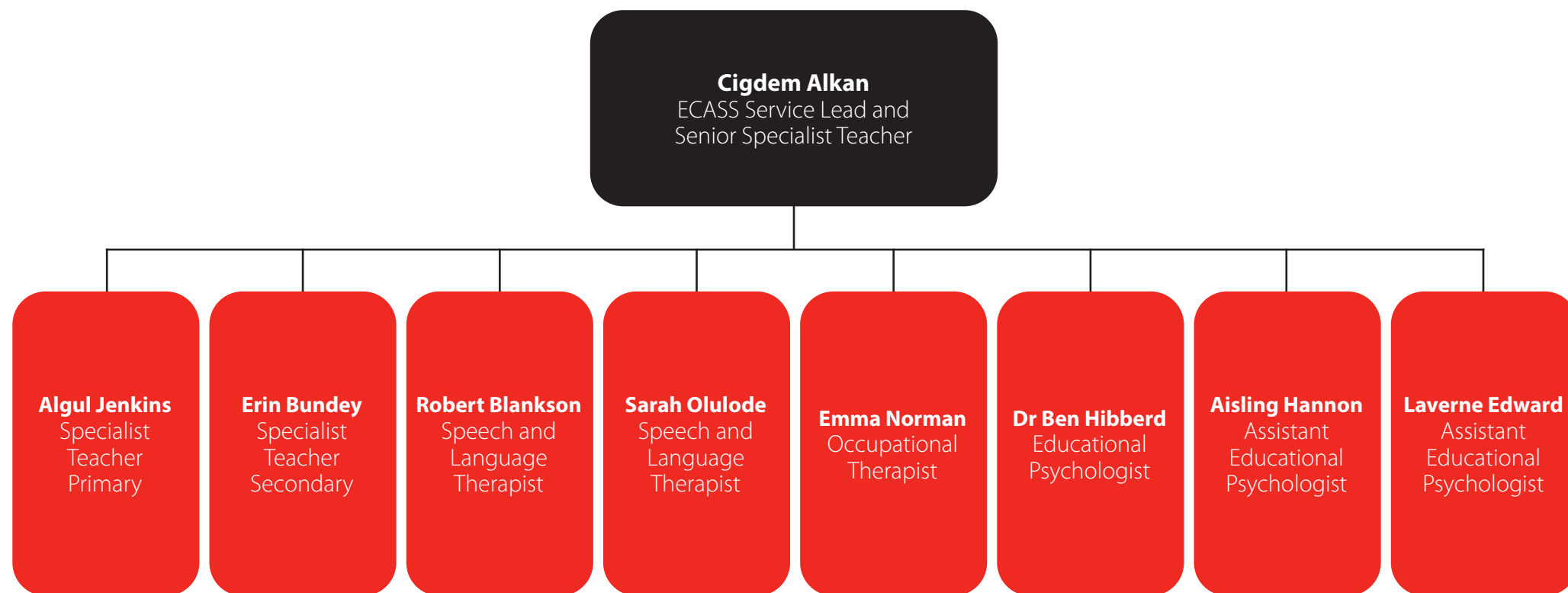
Assessment and Care Management Structure Chart



EY SEND Team Structure Chart



ECASS Structure Chart



Contact Enfield Council

Civic Centre
Silver Street
Enfield
EN1 3XY

www.enfield.gov.uk

