

Would you like to contribute to this newsletter?
Email Samantha.hill@enfield.gov.uk

SAFEGUARDING ROUND UP

19/04/24

SEYIS

Schools and Early Years Improvement Service

www.enfield.gov.uk

Striving for excellence



Spin the Wheel!

[Safeguarding - Spin the wheel \(wordwall.net\)](http://wordwall.net)



Harmful Sexual Behaviour (HSB) Working Group – Thursday 6th June

E-Safety Working Party: 11th June, 2pm, Carterhatch Junior School. All welcome.

DSL Peer Advice Group: Thursday 26th June, 3.35pm, Enfield County School for Girls

Inclusion Exhibition: 3rd July, West Lea

DSL Network Meetings, Summer Term

DSL Network meeting: 30th April, 3.30pm

Microsoft Teams meeting

Join on your computer, mobile app or room device

[Click here to join the meeting](#)

Meeting ID: 328 397 142 833

Passcode: c2yEKM

Planning meeting: 18th June, 3.30pm

Microsoft Teams meeting

Join on your computer, mobile app or room device

[Click here to join the meeting](#)

Meeting ID: 325 794 675 77

Passcode: Y9BWyp

DSL Network meeting: 9th July, 3.30pm

Microsoft Teams meeting

Join on your computer, mobile app or room device

[Click here to join the meeting](#)

Meeting ID: 316 212 411 126

Passcode: N3yoG8

If you would like to contribute to our Network meeting, or have an idea of what might be useful, then please contact Samantha.Hill@enfield.gov.uk or seyis@enfield.gov.uk, or attend our planning meetings, where all are welcome.

Keeping Children Safe in Education 2025

The government has announced that it is to make only 'technical' changes to KCSIE for September 2024, 'with a view to providing a more substantively updated document, encompassing wider changes, to be delivered in 2025.'

The DfE has launched a 'call for evidence' from practitioners and others, saying that:

'this call for evidence is...deliberately broad and seeks to reflect areas and issues that have been shared by school and college safeguarding professionals, or where wider systemic changes mean we have an opportunity to better align school and college safeguarding policy, including the findings of Ofsted's 'Big Listen.' ... Whilst we will not be publishing the results of this call for evidence, we will consult on any substantive changes we make to future iterations of KCSIE, and school and college safeguarding policy, following this exercise, in the normal way.'

Areas covered in the call for evidence include:

- The role of the designated safeguarding lead
- Recording, retention and sharing of child safeguarding information
- Safer recruitment
- Filtering and monitoring
- Supporting children following reports of sexual violence and harassment
- Protecting children in boarding schools and residential special schools
- Quality assuring safeguarding
- Children bringing their own devices to schools
- Artificial intelligence

The survey can be completed online here: [Keeping Children Safe in Education: A Call for Evidence](#) and closes on **Thursday 20th June 2024**.

DSL Peer Advice Group

At the request of Enfield DSLs, we will be holding a termly **DSL Peer Advice Group**.

This group will offer a confidential space for safeguarding leads to discuss complex cases and seek advice from other DSLs and any professionals who choose to attend.

Our first group will be held on **Thursday 26th June, 3.45pm, Enfield County School for Girls (Upper School)**.

All DSLs, senior leaders and professionals from Enfield services are welcome to attend. Please come along!

Training – Professional Learning Portal

Book on our professional learning portal:

<https://traded.enfield.gov.uk/thehub/professional-learning-portal/safeguarding>



Designated Safeguarding Lead Training -
March 2024



Designated Safeguarding Lead Training -
May 2024



Designated Safeguarding Lead Training -
June 2024

Training – Safeguarding Enfield

There is a great deal of quality (and FREE) training available from Safeguarding Enfield.

[Training | Safeguarding Enfield](#)

What else does ECP offer?



Child Protection Courses - Specialist Training Company - ECP Limited

Safeguarding Audits / Reviews: Safeguarding audits which are carried out in a collaborative way to help the safeguarding team evaluate their practice and ensure the school is implementing a robust culture of safeguarding. Either a 1 day on site review, or 2 day in depth audit – which can be tailored to the needs of the school we are working with.

Safeguarding Supervision: Provided either live virtually or F2F, on an agreed frequency with supervisee, the offer can be to an individual, or for a number of individuals over 1 day.

Online Safety: ECP offers online safety sessions **for staff, pupils and parents**, either as a package with a session for each group (see more info [here](#)) or for an individual group of your choice (see more info [here](#)).

We work with pupils F2F, delivering bespoke sessions to each year group across the school day.

Alternatively, a self-paced version of the sessions are available, for teacher lead self-paced delivery, or for individual access (secondary)

Child on Child abuse assemblies (secondary): We offer child on child abuse sessions for staff, pupils and parents, either as a package with a session for each group (see more info [here](#)) or for an individual group of your choice (see more info [here](#)).

We work with pupils F2F, delivering bespoke sessions to each year group across the school day.


Alternatively, a self-paced version of the sessions is available, for teacher lead self-paced delivery, or for individual access.

Pupil workshops (KS2): We offer KS2 (Year 5 & 6) classroom-based workshops which are 1 hour in duration, mapped to the RSHE curriculum, across topics including bullying, healthy relationships, mental health and online safety.

Even more from ECP



Child Protection Courses - Specialist Training Company - ECP Limited

- New Blog Post  ['Information Sharing - Guidance for those providing safeguarding services to children, young people, parents and carers'](#)
Explore how to share information effectively to protect children's welfare. Legal frameworks like GDPR support responsible sharing. Spot signs of abuse, collaborate with relevant authorities, and adhere to key legislation. Follow clear principles for necessary, relevant, and secure sharing. Bust myths hindering effective communication.
- Podcast: In case you missed it: [Listen to our latest episode](#) to learn about how to engage and capture the voice and views of young people with SEND. We are joined in this episode by three members of staff from West Lea school; Head of Pastoral Development and the Designated Safeguarding lead (DSL) - Catherine Goodwin, Kathryn White - Attendance and Safeguarding officer and Jeanette Fuster - Safeguarding Officer.
- Shareables for parents and professionals: Our KidsOnlineWorld latest shareables focuses on the safety tips for parents and carers regarding children and [online challenges](#).

Training and Information - other

[NSPCC Learning](#) – low cost, well made, broad range

[ESFA Fast Form \(fasst.org.uk\)](#) – £1200 Government grant to train a Senior Mental Health Lead

<https://youtu.be/OTJYYNP9AEc?si=q7RRMvBVjuWLouze> – Ofsted webinar

[Events - UK Safer Internet Centre](#) – Online events and webinars

[Filtering and Monitoring | SWGfL](#) - a series of webinars

[Home | KCSIE Webinar Series \(orcula.co.uk\)](#) KCSIE 2023 webinars

[Virtual College](#) - free safeguarding courses

[Safeguarding In Schools](#) - Andrew Hall

[Educate Against Hate - Prevent Radicalisation & Extremism](#)



COUNTY LINES COMMUNITY EVENT

SAT 4TH MAY
10AM TO 1:30PM

Wilbury Primary School
Edmonton, N18 1DE

BOOK YOUR FREE TICKET | LIMITED SPACES AVAILABLE



Leo Powell



Juliana Trompowsky



Sabrina Hewitt



Tara Hanna

Book your space here: <https://www.ticketsource.co.uk/leo-powell/t-eavxaov> #countylines

LADO Concern

Information has been received from London Borough of Newham LADO of concerns regarding a doctor coming from overseas to facilitate a webinar/intervention in Newham for autistic children. The treatment the individual is proposing to undertake is a procedure involving the possible extraction and transfer of bone marrow/spinal fluid to the child's brain matter by injection. This unlicensed procedure is being promoted as a miracle cure for autism. It is currently thought that the individual plans to arrive in the UK on 22 April 2024.

This has also been reported by the BBC and is being investigated by the Metropolitan Police:

[Met investigates 'stem-cell autism cure' claim - BBC News](#)

Questions we've been asked this week

Q: Should interviews include a safeguarding question?

A: It is strongly recommended. The safeguarding question should reflect the position the candidate is applying for.

Q: What should I look for when checking a reference?

A: You should check that the reference is:

- From a line manager, ideally a headteacher
- From most recent position and previous position
- From a professional email address or equivalent
- That safeguarding is addressed within the reference
- That the address is the correct one for the school
- See KCSIE 2023 for full advice:

[Keeping children safe in education 2023 \(publishing.service.gov.uk\)](https://publishing.service.gov.uk/government/uploads/system/uploads/attachment_data/file/115222/Keeping_children_safe_in_education_2023.pdf)

A whirlwind guide to... Overseas Checks

If you are appointing someone who has lived overseas, schools typically conduct an **overseas check** and record this on their **SCR**.

This could include:

- Contacting the **police department or regulating body** of a specified country
- Requesting a **letter via the applicant** from the professional regulating body in the country the applicant has worked in
- Making **any other checks** the school believes are appropriate

How do we contact the police department/regulating body of a specific country?

Details of how to obtain such a check from the relevant authorities abroad [are available on GOV.UK](#).

If the country concerned is not listed, [please contact the relevant embassy or consulate for further details](#).

How does an applicant obtain a letter from the regulating body of a specific country?

Again, check [GOV.UK](#) and if the country concerned is not listed, [please contact the relevant embassy or consulate](#)

Keeping Children Safe in Education 2023

(Page 74)

Individuals who have lived or worked outside the UK

280. Individuals who have lived or worked outside the UK **must**⁹¹ undergo the same checks as all other staff in schools or colleges (set out in paragraphs 232). This includes obtaining (via the applicant) an enhanced DBS certificate (including children's barred list information, for those who will be engaging in regulated activity) even if the individual has never been to the UK. In addition, schools and colleges **must**⁹² make any further checks **they think appropriate** so that any relevant events that occurred outside the UK can be considered. Following the UK's exit from the EU, schools and colleges should apply the same approach for any individuals who have lived or worked outside the UK regardless of whether or not it was in an EEA country or the rest of the world.

These checks **could** include, where available:

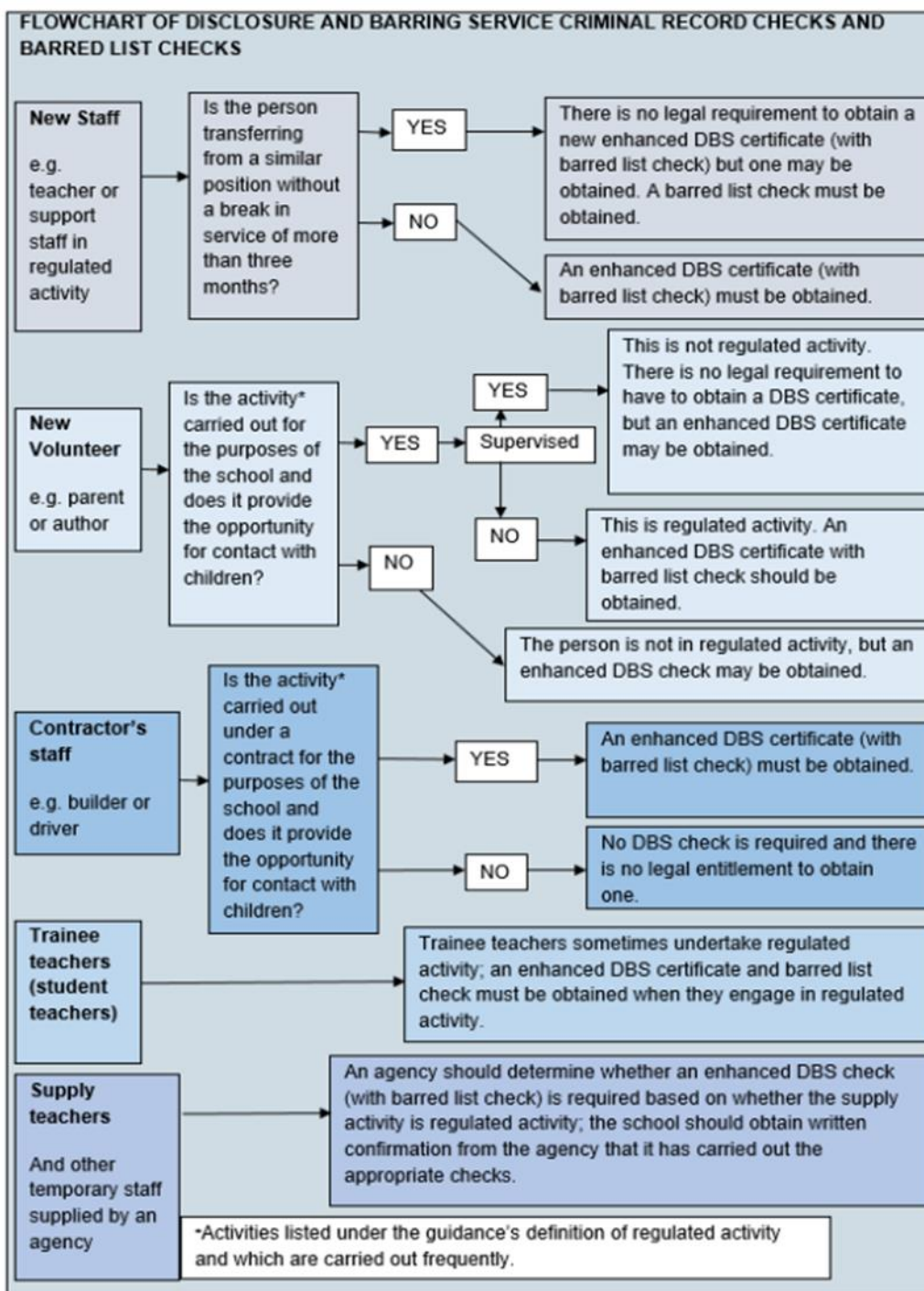
- criminal records checks for overseas applicants – Home Office guidance can be found on [GOV.UK](#); and for teaching positions
- obtaining a letter (via the applicant) from the professional regulating authority (this is often the Department/Ministry of Education but varies across the world) in the country (or countries) in which the applicant has worked confirming that they have not imposed any sanctions or restrictions, and or that they are aware of any reason why they may be unsuitable to teach. Applicants can find contact details of regulatory bodies in the EU/EEA and Switzerland on the [Regulated Professions database](#). Whilst the safeguarding and qualified teacher status (QTS) processes are different it is likely that this information will be obtained from the same place, therefore applicants can also contact the [UK Centre for Professional Qualifications](#) who will signpost them to the appropriate EEA regulatory body.

281. **Where available** such evidence can be considered together with information obtained through other pre-appointment checks to help assess their suitability.

282. **Where this information is not available** schools and colleges should seek alternative methods of checking suitability and or undertake a risk assessment that supports informed decision making on whether to proceed with the appointment.

283. Although sanctions and restrictions imposed by another regulating authority do not prevent a person from taking up teaching positions in England, schools and colleges should consider the circumstances that led to the restriction or sanction being imposed when considering a candidate's suitability for employment. Further information can be

KCSIE 2023 Flowchart



Traded Services

If you would like to commission a safeguarding or SEND review, or would simply like more information about what we offer, please email the SEYIS team

Social Media and Online Safety – a working party

Want to join our working party? Email [Samantha Hill@enfield.gov.uk](mailto:Samantha.Hill@enfield.gov.uk)

Safeguarding Triads

Interested? Email Samantha.hill@enfield.gov.uk

The Hub

[Welcome to The Hub | Enfield Council](#)

The Hub Safeguarding Pages contain useful documents, links and summary guidance. Pop a shortcut on your desktop.

Let us know if you would like anything added or amended.

Contribute

Want to add a page to an upcoming RoundUp? Send it in!

For all the above, email Samantha.Hill@enfield.gov.uk or SEYIS@enfield.gov.uk

Enfield Profile: Mervin Cato

Head of Secondary Support Service

Mervin Cato is Head of the Secondary Behaviour Support Service and has worked in education for over 20 years.



In 2018 Enfield Council launched **Nexus**, an initiative which aimed to reduce permanent exclusions and serious youth violence. Since then, permanent exclusions have decreased by 80%. This has allowed for the PRU to do more preventative work with individual students.

Mervin along with the BSS team continues to connect with families, community leaders, head teachers, faith groups, charities, the police, local and national businesses, and educational organisations to support young people in Enfield. The NEXUS family has worked together to transform mindsets and to focus on improving young people's aspirations, opportunities and ultimately their life chances.

Email: Mervin.Cato@enfield.gov.uk

Useful People, Useful Links

KCSIE 2023	Keeping children safe in education - GOV.UK (www.gov.uk)
The Hub	Welcome to The Hub Enfield Council
Safeguarding Enfield webpage	Safeguarding Enfield
Professional Learning Portal	https://traded.enfield.gov.uk/thehub/professional-learning-portal/safeguarding
Mind in Enfield	0208 906 7505 mindinenfield.org.uk
Prevent Education Officer	maddie.street@enfield.gov.uk
HEART Team <i>for Looked After Children and Post Adopted CYP</i>	Suzanne.Rowson@enfield.gov.uk
MASH Service Manager	Michelle.Ferdinand@enfield.gov.uk
LADO (Bruno Capela)	safeguardingservice@enfield.gov.uk
Enfield Educational Psychology Service	eps@enfield.gov.uk
CAMHS Crisis Line 24/7	24/7 Crisisline 0800 1510023 [9-5pm Monday to Friday all Crisisline calls get diverted to SAFE . T/N 0208 7024070]
Samantha Hill <i>Senior School Improvement Advisor for Safeguarding and Inclusion</i>	Samantha.Hill@enfield.gov.uk