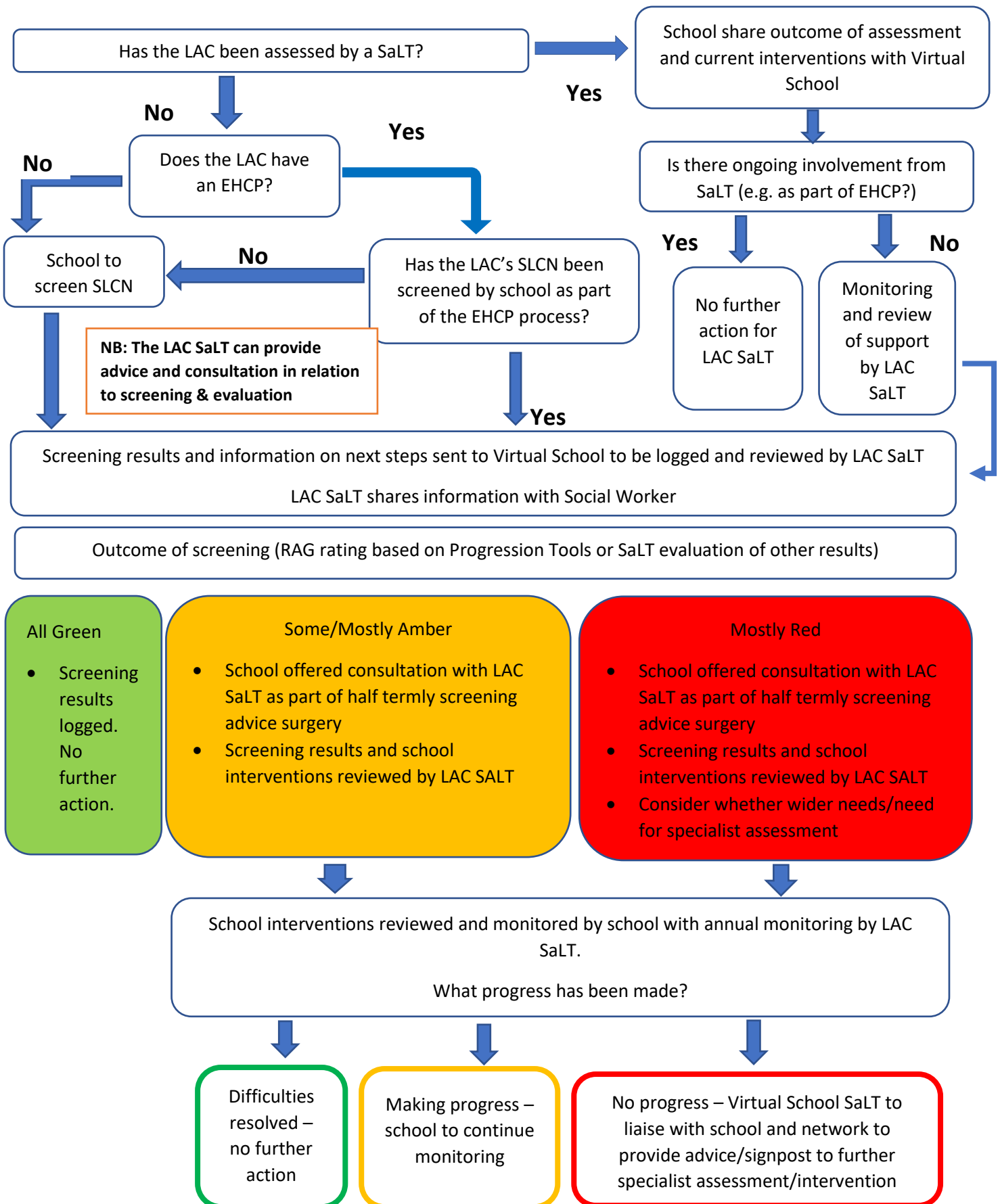


# Enfield Virtual School Looked After Children

## Speech, Language and Communication Needs Screening Process for children attending Nursery to Year 11

### Advice for Schools



## SLC Screening Programme – Information Sheet

**The Enfield Virtual School are asking that all schools screen the Speech, language, and communication skills of their Looked After Children.**

### **Why we are asking schools to carry out this screening:**

- ❖ A disproportionately high number of Looked after Children (LAC) present with speech, language and communication needs (SLCN) (Cross 1999, 2001) compared to the general population.
- ❖ Regional scoping studies indicate that there are a huge number (62%) of LAC with unidentified SLCN
- ❖ In one recent study, 90% of care leavers' language abilities were assessed to be below average and over 60% met criteria for Language Disorder in combination with literacy difficulties, developmental disorders and social, emotional and mental health difficulties (Clegg et al, 2021).
- ❖ As of May 2023, the Enfield Virtual School have received SLCN screening results for 61% of their LAC (both those placed within Enfield and out of borough), of those screened, 81% have been identified as having SLCN.
- ❖ Due to the complex profiles of our LAC, many of their SLCNs are unidentified and unsupported. Without identification and support these communication needs have significant and long-term impacts on a young person's education, social relationships, mental health and wellbeing and employability.

### **What we are asking schools to do:**

- ❖ To screen the speech, language and communication needs of all their LAC if not done so already.
- ❖ We are recommending that a comprehensive screening tool such as the Progression Tools is used. This allows you to screen a wider range of areas than using of more restrictive screener and will give a better indication of whether there are any underlying needs.
- ❖ The Progression Tools is available here - <https://www.speechandlanguage.org.uk/shop-for-educators/> There are packs available for Primary and Secondary settings.

### **Advice and support available for schools to support with screening:**

- ❖ The LAC Speech and Language Therapist is available for consultation and advice for schools. As part of consultation, they can support with: *how to deliver the screening tool, how to score the screening tool, how to interpret the results, how to support the child's language and communication based on the result of the screening.*
- ❖ Training is available from ECASS on screening using the Progression Tools. Please see the ECASS website for further details <https://ecass.org.uk/course/progression-tools-screener-training/>
- ❖ Helpful advice and strategies are also available on the ECASS website to support you to know what to do <https://ecass.org.uk/next-steps-after-screening/> (Primary), <https://ecass.org.uk/next-steps-after-screening-secondary-2/> (Secondary)

### **Next steps:**

- ❖ Please send the results of the screening via email to the Speech and Language Therapist. The results will be recorded by the Virtual School and shared with the child's Social Worker.
- ❖ If the screening has identified SLCNs, the Speech and Language Therapist will send school an invite to a consultation to discuss the screening and provide advice as needed. This will be reviewed annually.

**Thank you for your co-operation with helping us to identify and support the language and communication skills of our most vulnerable children and young people. We are here for support, guidance and signposting so please get in touch if you have any questions or concerns ([kate.gill@enfield.gov.uk](mailto:kate.gill@enfield.gov.uk))**