

Would you like to contribute to this newsletter?  
Email [Samantha.hill@enfield.gov.uk](mailto:Samantha.hill@enfield.gov.uk)

PLEASE DO SHARE

# SAFEGUARDING ROUND UP

**28/03/25**

**SEYIS**

**Schools and Early Years Improvement Service**

[www.enfield.gov.uk](http://www.enfield.gov.uk)

Striving for excellence



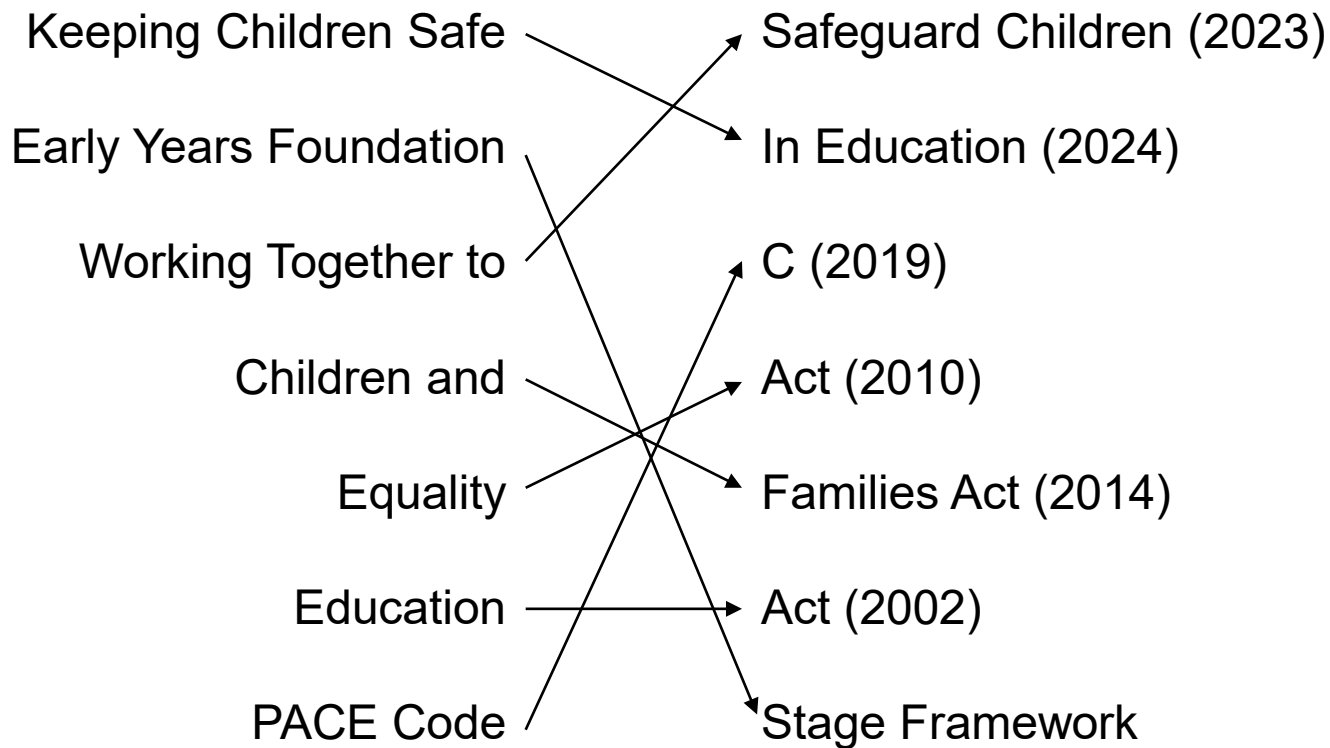
# MATCH MADNESS

Can you match the two parts of the document titles?

Keeping Children Safe	Safeguard Children (2023)
Early Years Foundation	In Education (2024)
Working Together to	C (2019)
Children and	Act (2010)
Equality	Families Act (2014)
Education	Act (2002)
PACE Code	Stage Framework

# MATCH MADNESS

Can you match the two parts of the document titles?



# For Your Diary

## Upcoming DSL meetings:

**Tues 10 June 2025 – Planning meeting, 3.30-4.30**

**Microsoft Teams**

[Join the meeting now](#)

Meeting ID: 331 044 020 021

Passcode: WcVqzc

**Tues 24 June 2025 – Network meeting, 3.30-5.00**

**Microsoft Teams**

[Join the meeting now](#)

Meeting ID: 318 756 159 632

Passcode: GvceDH

**Calendar invites will be sent to all DSLs**

Slides from the last DSL Network meeting are  
available here

## Other dates for your diary:

**2<sup>nd</sup> April 3.30-5 (online).**

**Working with Homeless Children – workshop.**

Email [seyis@enfield.gov.uk](mailto:seyis@enfield.gov.uk) to book your place

## Useful Reminders:

### Keep Your Child Safe Online

Have you organised your parent workshops for Years R, 5, 7 and 9 yet? Are the materials published on your school website and displayed in your school foyer?

**Materials** are published here, including slides for parent courses:

[Online Safety | Enfield Council](#)

### Safeguarding self audit

Have you returned your audit yet? Any audit format is acceptable, but our form is easy to use, comprehensive and available on [The Hub | Enfield Council](#). All schools are expected to return this to us each academic year. Send to [seyis@enfield.gov.uk](mailto:seyis@enfield.gov.uk)

# Restraint Guidance Updates September 2025

## Key updates include:

### 1. Statutory Requirement to Record and Report Use of Force (Effective September 2025)

From September 2025, schools will be legally required to record and report incidents where reasonable force is used. This aims to ensure greater transparency and accountability in the use of force, helping schools to monitor and review practices;

Schools will need clear policies and processes in place to comply with these new requirements.

### 2. Guidance on Other Restrictive Interventions (Non-Statutory)

The new guidance expands beyond reasonable force to include other restrictive interventions, such as:

- Physical restraint (holding, blocking, guiding);
- Seclusion or isolation (removing a child from an area or restricting their movement);
- Mechanical restraints (e.g., arm splints in certain medical cases);
- Chemical restraint (use of medication to manage behaviour).

Schools are advised to use positive behaviour strategies to reduce reliance on restrictive practices.

### 3. Strengthened Guidance on When Reasonable Force is Appropriate

Clarification that reasonable force should only be used as a last resort when absolutely necessary to:

- prevent harm to a child or others;
- stop a criminal offence or property damage;
- maintain discipline in exceptional circumstances.

An emphasis on proportionality – force used must be reasonable and justifiable.

### 4. Specific Provisions for Pupils with SEND and Vulnerable Learners

The guidance recognises that pupils with Special Educational Needs and Disabilities (SEND) are more likely to be subjected to restrictive interventions;

Schools must provide reasonable adjustments and consider de-escalation techniques before resorting to force;

Encourages individual behaviour plans for pupils at risk of needing restrictive interventions.

### 5. Responsibilities of Schools, Governing Bodies, and Proprietors

School leaders and governors must ensure staff are trained and competent in behaviour management and use of force;

Staff must be aware of legal protections and understand the emotional and psychological impact of using force on pupils;

Governing bodies should monitor trends in the use of force and ensure schools comply with recording and reporting requirements

# Smartphone Free Childhood

Many Enfield schools have signed up to send this letter (draft, right) to parents, suggesting that smartphones are not brought to school and are restricted for all children under the age of 14, with social media restricted until the age of 16.

The draft has been sent to school headteachers. This Google Form adds your school's signature. We are aiming for 80%+ of Enfield schools to add their names. This includes maintained schools, academies, independent schools and APs.

Please pass this on to your headteacher:

[Google Form - Smartphones](#)



A whirlwind guide to...

# Social Care Reforms 2025/26

[Keeping children safe, helping families thrive - GOV.UK](#)

## The case for change

Plans to reform children's social care and rebalance the system towards early intervention through family help and strengthened multi-agency child protection.

-The number of children in care (as at the end of March) has increased by 22% since 2014 from 68,790 to 83,930.

-The number of Section 47s has almost doubled from 127,190 to 224,520 in 10 years.

-Nearly two million children needed the support of a social worker before the end of their school years, the equivalent of five in every classroom.

-Total spend on children's services has increased but is increasingly dominated by statutory services and not early help and support.

## Principles underpinning the change programme

1. Children should remain with their families and be safely prevented from entering the care system in the first place.
2. Where children cannot remain at home there should be support for children to live with kinship carers or in fostering families, rather than in residential care.
3. The broken care market must be fixed by ending excessive and exploitative profit making in a sector which supports our most vulnerable children.
4. Investment in the key enablers which underpin the children's social care system – including the workforce, better data and information sharing and scaling and spreading evidence-based programs which have improved children's outcomes

## What's new?

Lots of change and development (see right), including the implementation of Family Help Teams and Multi-Agency Child Protection Teams

## Transformation Programme - communication

Enfield will keep you informed through Headteacher briefings, DSL Network meetings, and more.

### Vision

The vision is to deliver a fully integrated end to end system of family help and child protection that protects all children from significant harm, inside and outside of the home.

Universal Early Help	Vision for an integrated system			Children in Care
	Targeted Early Help	Child in Need	Child Protection	



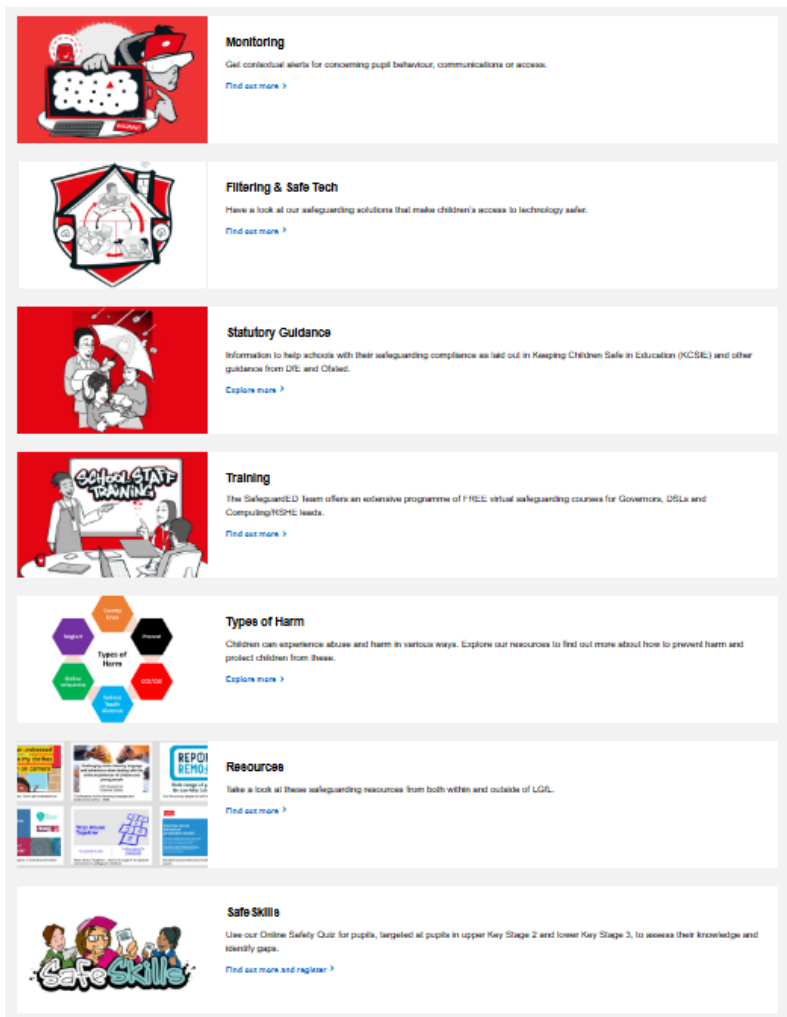
### Background Papers:

Keeping Children Safe: Helping Families Thrive 2024  
Families First Programme Guidance 2025  
Children's social care: national framework GOV.UK 2024  
Safeguarding Children with Complex Health Needs in Residential Settings April 2023  
Working Together to Safeguard Children 2023  
National Review into the murders of Arthur Labinjo- Hughes and Star Hobson May 2022  
The Independent Review of Children's Social Care May 2022  
The Competition and Markets Authority study into Children's Social Care Placements March 2022

What will stay the same	What will change
All referrals continue to go through to MASH	MASH structure has been strengthened with stronger early help offer
Current threshold document remains in place	
Assessments of children and families will continue	Single Family Assessment will be used by all family help practitioners (social work and alternatively qualified staff)
Strategy meetings, CP investigations, case conference processes remain the same	Experienced multi-agency child protection team will lead the decision making from the point of strategy meeting through to conference processes ending, offering advice guidance and support to the family help teams and partners  Advocacy offered to parents at the point of strategy meeting
Planning will stay the same (early help, children in need, children subject to child protection plans, family group conferences)	One family plan used by all practitioners  Increased use of family group conferences from the point of referral
Direct work with children and families	Some children in need will be supported by family help practitioners who are not social workers
Pre-proceedings PLO (public law outline) processes	
Care proceedings	
Support for children in care including LAC reviews	
Support for care leavers and former relevant care leavers	
Fostering and adoption processes	

# LgFL – Staff Quizzes and training

Good quality, great breadth, accessible - and FREE!



The screenshot displays the LGFL Safeguarding website with the following sections:

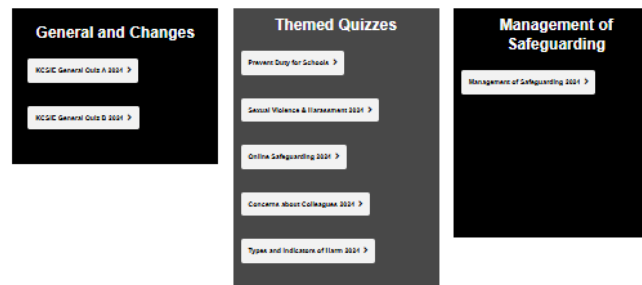
- Monitoring**: Get contextual alerts for concerning pupil behaviour, communications or access. [Find out more >](#)
- Filtering & Safe Tech**: Have a look at our safeguarding solutions that make children's access to technology safer. [Find out more >](#)
- Statutory Guidance**: Information to help schools with their safeguarding compliance as laid out in Keeping Children Safe in Education (KCSIE) and other guidance from DfE and Ofsted. [Explore more >](#)
- Training**: The SafeguardED Team offers an extensive programme of FREE virtual safeguarding courses for Governors, DSLs and Computing/PSHE leads. [Find out more >](#)
- Types of Harm**: Children can experience abuse and harm in various ways. Explore our resources to find out more about how to prevent harm and protect children from these. [Explore more >](#)
- Resources**: Take a look at these safeguarding resources from both within and outside of LGFL. [Find out more >](#)
- Safe Skills**: Use our Online Safety Quiz for pupils, targeted at pupils in upper Key Stage 2 and lower Key Stage 3, to assess their knowledge and identify gaps. [Find out more and register >](#)



A grid of 9 resource cards, each with an illustration and a 'Find out more >' link:

- Digital Strategy
- Ofsted Inspection Support
- Latest Tech Pilots
- Staff Training and CPD
- Learning Resources
- SEND and Inclusion
- Mental Health and Wellbeing
- Blogs
- Newsletters

## Let's Get Quizzing!



Three panels of quiz options:

- General and Changes**
  - [KCSIE General Quiz A 2024 >](#)
  - [KCSIE General Quiz B 2024 >](#)
- Themed Quizzes**
  - [Prevent Duty for Schools >](#)
  - [Sexual Violence & Harassment 2024 >](#)
  - [Online Safeguarding 2024 >](#)
  - [Concerns About Colleagues 2024 >](#)
  - [Types and Indicators of Harm 2024 >](#)
- Management of Safeguarding**
  - [Management of Safeguarding 2024 >](#)



# UNICEF Rights Respecting Schools Award

- The VRU has funded the Rights Respecting School Award for the next 3 years. We have had quite a few Enfield schools start this journey. Will your school take advantage of this generous offer?
- Find out more here: [The Rights Respecting Schools Award | UNICEF UK](#)
- Contact Helen Trivers if your school wants to be part of this: [htrivers@unicef.org.uk](mailto:htrivers@unicef.org.uk)

# FGM – Naima Ali

## An important mic drop - Courage Calls to Courage Everywhere

### [Naima Ali Vs Female Genital Mutilation](#)

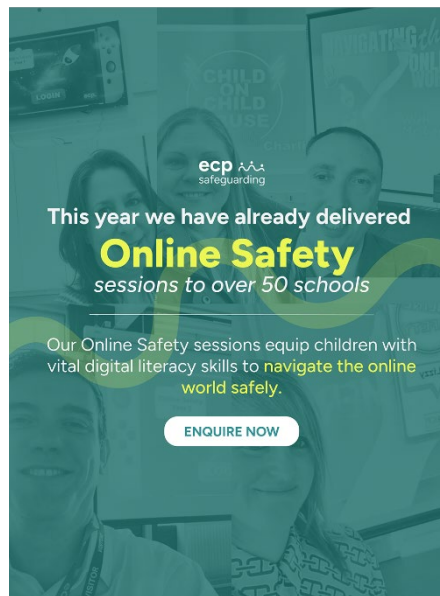
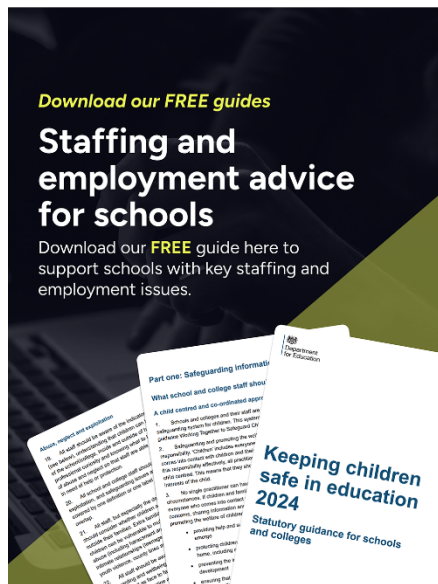
*This is a 7 minute mic drop on FGM, with FGM ambassador and survivor, Naima Ali. Naima shares in 7 minutes:*

- \* 3 hidden harms women surviving FGM may be facing*
- \* A powerful direct message to women survivors*
- \* 3 things that professionals do which is accidentally retraumatising survivors*
- \* 3 alternatives professionals can use to heal, not harm.*

### [Naima Ali Vs Female Genital Mutilation - YouTube](#)

## [Our latest blog: Staffing and employment advice for schools](#)

This blog explores crucial advice for school employers on staffing and employment issues, guided by the latest regulations and statutory guidance. Stay informed with up-to-date legislation for maintained schools, independent schools, academies, and free schools.

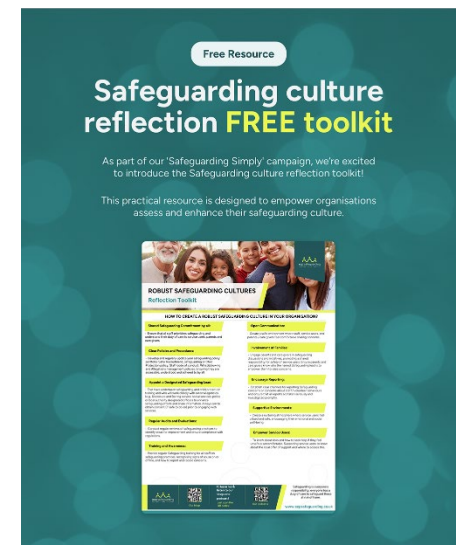


50 schools have provided amazing feedback on our [Online Safety packages](#) so far this year – we want to work with you too!

Our Online Safety sessions equip children with vital digital literacy skills to navigate the online world safely, focusing on technical, media, and social literacy. Flexible packages are available for staff, pupils, and parents, with options for face-to-face or self-paced, teacher-led sessions tailored by year group.

As part of our 'Safeguarding Simply' campaign, we're excited to introduce the [Safeguarding culture reflection toolkit!](#)

This practical resource empowers schools to assess and enhance their safeguarding culture, whether for self-reflection or team discussions.



# NSPCC Training

## Safeguarding and child protection training in schools | NSPCC Learning



### Safeguarding training for schools, academies and colleges

Develop or refresh your awareness and understanding of child protection in schools, academies and colleges.

Cost: £35 per person

[See course >](#)



### Safer recruitment in education

Ensure your safer recruitment processes are effective, from preparing to recruit staff or volunteers through shortlisting, interviewing and carrying out vetting and barring checks.

Cost: from £35 to £245 per person

[See course >](#)



### Online safety

Gain the skills and confidence you need to help keep children safe online and respond appropriately to concerns including new and emerging online harms, sex and relationships online and online bullying.

Cost: £30 per person

[See course >](#)



### Designated safeguarding lead (DSL)

Learn about your responsibilities as a Designated safeguarding lead (DSL) in England with our new-to-role training, or build on your existing skills and knowledge about dealing with complex safeguarding concerns with our refresher course.

Cost: from £225 per person

[See course >](#)



### School governors and trustees

Understand your safeguarding responsibilities and role in creating a safer culture in your school. Learn about policies, procedures, principles and practice so you can play your part in ensuring a consistent and whole-school approach to keeping children and young people safe.

Cost: £25 per person

[See course >](#)



### Strategic safeguarding in education

Gain a comprehensive understanding of strategic safeguarding, how to provide effective leadership and challenge, and develop practical skills for managing safeguarding at scale in your academy, school or college.

Cost: from £450 per person

[See course >](#)



### Safeguarding children who have SEND

Find out how you can better identify safeguarding concerns and communicate effectively when working with pupils with special educational needs and disabilities and additional needs.

Cost: £30 per person

[See course >](#)



### Harmful sexual behaviour (HSB) in schools

Get the knowledge and skills you need to recognise, report and record sexualised behaviour concerns in both primary and secondary school settings.

Cost: £35 per person

[See course >](#)



### Sharing nudes and semi-nudes

Learn what steps you need to take to respond appropriately to incidents of nude image sharing or sexting – whether images, videos or livestreams. Covers how to recognise when sharing imagery is harmful sexual behaviour and how to respond appropriately.

Cost: £25 per person

[See course >](#)



### Talk Relationships

Feel confident to deliver inclusive sex and relationships education with our online courses for secondary school teachers and leaders. Part of our Talk Relationships service that supports schools to overcome any challenges they may face when delivering sex and relationships education.

Cost: Free

[See course >](#)

### Child protection supervision skills training

[Buy now >](#)

**Price**  
From £1125 per person

**Format**  
Face-to-face / Virtual

**Locations**  
England

**CPD**  
CERTIFIED

Call us: 0116 234 7246

Email us: [learning@nspcc.org.uk](mailto:learning@nspcc.org.uk)

Online: [Contact us](#)

**Face-to-face training enabling you to gain the safeguarding supervision skills you need to protect children and support staff in their role**

Gain the supervisory skills you need for a safeguarding and child protection-based role.

Taught by experienced professionals, this five-day course will help you learn how to support staff with any safeguarding and child protection concerns they may have, and make sure child-centred activities are delivered safely.

#### Benefits of the course

- ✓ Delivered by expert trainers who are at hand to answer any questions you may have
- ✓ Covers in-depth information around supervision and child protection across five days



### School safeguarding updates: webinar series

Hear from the NSPCC's experts about current child protection topics for schools and colleges. These virtual sessions take place on Zoom at the end of the school day, helping you keep up to date with the latest safeguarding issues and best practice.

[Find out more >](#)

[Child protection supervision skills training | NSPCC Learning](#)



# A Quick Reference Guide

Safeguarding RoundUp	A weekly newsletter which gives an overview of updates, training and general information about safeguarding. Many schools share this with their entire staff body. Sign up: <a href="mailto:seyis@enfield.gov.uk">seyis@enfield.gov.uk</a>
DSL Network Meetings	A half termly Teams meeting for DSLs and senior leaders, attended by most DSLs in the borough. Range of guest speakers and important updates. Dates and Teams links published in the Safeguarding RoundUp. Contact <a href="mailto:seyis@enfield.gov.uk">seyis@enfield.gov.uk</a> .
The Hub	Lots of tools, documents and information to support your work in your school, including safeguarding audits, website audits, inclusion audits, online safety tools, signposting and model policies. <a href="#">Welcome to The Hub   Enfield Council</a>
Safeguarding Enfield	Training, information and resources. <a href="#">Safeguarding Enfield</a>
Safeguarding Self Audit	Your school is expected to return a self-audit annually, using either our own Safeguarding Self-Audit Tool (available from The Hub or by emailing <a href="mailto:Samantha.Hill@enfield.gov.uk">Samantha.Hill@enfield.gov.uk</a> ) or another format. It is recommended as part of your Autumn Term calendar. Email your document as a PDF to <a href="mailto:seyis@enfield.gov.uk">seyis@enfield.gov.uk</a>
Ofsted/DfE/other official safeguarding complaints	These will be investigated either by the LADO or by SEYIS (Samantha Hill). We will contact you to explain the complaint and will request some relevant information from you, including the school's narrative. A response is usually expected within a week.
Online Safety	Materials can be found here: <a href="#">Online Safety   Enfield Council</a> .
Safeguarding Reviews	Contact <a href="mailto:Samantha.Hill@enfield.gov.uk">Samantha.Hill@enfield.gov.uk</a> if you are interested in commissioning a full Safeguarding Review. We also offer SEND and curriculum reviews.
Advice and support	Contact me any time for reasons big or small. Always happy to help or point you in the direction of someone who can: <a href="mailto:Samantha.Hill@enfield.gov.uk">Samantha.Hill@enfield.gov.uk</a>

# Useful People, Useful Links

<b>KCSIE 2024</b>	<a href="https://www.gov.uk">Keeping children safe in education - GOV.UK (www.gov.uk)</a>
<b>The Hub</b>	<a href="#">Welcome to The Hub   Enfield Council</a>
<b>Safeguarding Enfield webpage</b>	<a href="#">Safeguarding Enfield</a>
<b>Professional Learning Portal</b>	<a href="https://traded.enfield.gov.uk/thehub/professional-learning-portal/safeguarding">https://traded.enfield.gov.uk/thehub/professional-learning-portal/safeguarding</a>
<b>Mind in Enfield</b>	0208 906 7505 <a href="http://mindinenfield.org.uk">mindinenfield.org.uk</a>
<b>Prevent Education Officer</b>	<a href="mailto:maddie.street@enfield.gov.uk">maddie.street@enfield.gov.uk</a>
<b>HEART Team</b> <i>for Looked After Children and Post Adopted CYP</i>	<a href="mailto:Suzanne.Rowson@enfield.gov.uk">Suzanne.Rowson@enfield.gov.uk</a>
<b>MASH Service Manager</b>	
<b>MASH Consultation Line</b>	02038556241
<b>LADO (Cathy Phelan)</b>	<a href="mailto:safeguardingservice@enfield.gov.uk">safeguardingservice@enfield.gov.uk</a>
<b>Enfield Educational Psychology Service</b>	<a href="mailto:eps@enfield.gov.uk">eps@enfield.gov.uk</a>
<b>CAMHS Crisis Line 24/7</b>	24/7 Crisisline 0800 1510023
<b>Samantha Hill</b> <i>Senior School Improvement Advisor for Safeguarding and Inclusion</i>	<a href="mailto:Samantha.Hill@enfield.gov.uk">Samantha.Hill@enfield.gov.uk</a> 07764801827